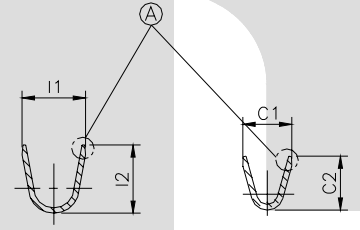


DETAIL B

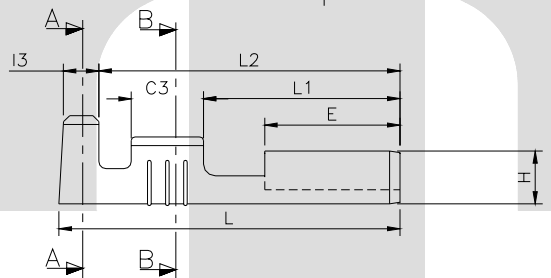
TERMINAL TO TERMINAL (MALE WITH FEMALE) (6.3X0.80 MALE WIHT TT-1012)		
DESCRIPTION	AT 1ST INSERTION	AT 10TH WITHDRAWAL
PUSH LOAD MAX.	2.00 KG.	
PULL LOAD MIN.		0.80 KG.
MAX. MV. DROP AT 10A	10 MV.	
MAX. MV. DROP AT 10A		15 MV.

DIMENSION SYMBOL	CLASSIFICATION DESCRIPTION
▲	CRITICAL

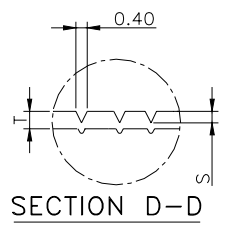


SECTION A-A

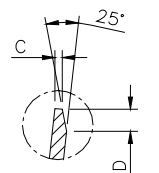
SECTION B-B



SECTION C-C



SECTION D-D



DETAIL A

CAT. NO.	L	E	W	H	R	G	G1	L1	L2	C3	I3	C1	C2	I1	I2	T	C	S	D	P	B
TOLERANCE	+0.3 -0.3	+0.2 -0.2	+0.15 -0.15	+0.1 -0.1	+0.1 -0.1	+0.05 -0.05	+0.2 -0.1	+0.2 -0.2	+0.2 -0.2	+0.1 -0.1	+0.1 -0.1	+0.2 -0.2	+0.3 -0.3	+0.2 -0.2	+0.3 -0.3	+0.02 -0.02	+0.05 -0.1	+0.02 -0.02	+0.3 -0.3	+0.05 -0.05	+0.00 -0.15
TT- 1012	18.7	7.50	7.50	2.95	1.70	0.55	0.80	10.9	16.4	4.10	2.20	4.40	5.50	6.50	6.20	0.32	0.20	0.08	0.60	21.0	2.30

CONTROLLED COPY  
TTPL

NOTES:-

MATERIAL	70/30 BRASS
FINISH	NATURAL
THICKNESS	0.32 ± 0.02
HARDNESS IN VPN	130 - 160

TT-1012

TERMINAL PITCH  $21.0^{+0.05}_{-0.05}$

PLATING THICKNESS :- 1.50 MICRON MIN. IN CASE OF PLATING  
 TERMINAL INSERTION FORCE INTO COUPLER:- 1.50 KG.MAX.  
 TERMINAL WITHDRAWEL FORCE INTO COUPLER:- 6.00 KG.MIN.

01	11 & FRONT CHAMFER	6.40 & NOT PROVIDED	6.50 & PROVIDED	28/06/05	AM	VENU	163	
REV.NO.	AL. NO.	WAS		CHANGED TO	DATE	NAME	CHD.BY.	ECN NO.
GEN TOL.	CAT NO	TAB SIZE	CABLE SIZE	ALL DIMENSIONS ARE IN MM				
0-10	± 0.10	TT-1012	6.30 X 0.80	2.0-3.0 mm <sup>2</sup>				
10-30	± 0.20	DRN BY	CHECKED BY	APPROVED_BY_DATE	FILENAME	DATE	SCALE	
		VENU	SANTOSH	SUJESH	Tt-1012	19-10-96	2:1	
30-100	± 0.30	<b>TT</b>			SNAP ON FEMALE TERMINAL			
100-300	± 0.50	TERMINAL TECHNOLOGIES (I) PVT. LTD.			DRAWING_NUMBER	D/TT/07.R01	SHEET 1 OF 1	