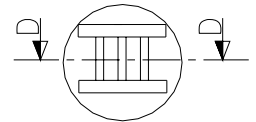
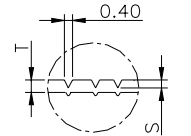


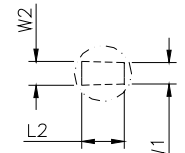
DETAIL A



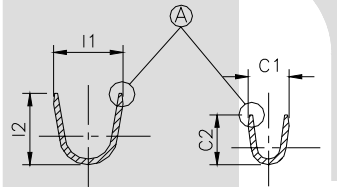
DETAIL B



SECTION D-D

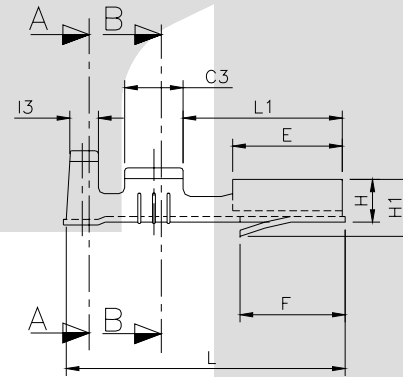


DETAIL C



SECTION A-A

SECTION B-B



TERMINAL TO TERMINAL (FEMALE WITH MALE) (TT-1013 WITH 6.30 X 0.80 MALE)		
DESCRIPTION	AT 1ST INSERTION	AT 10TH WITHDRAWAL
PUSH LOAD MAX.	2.00 KG.	
PULL LOAD MIN.		0.80 KG.
MAX. MV. DROP AT 10A	10 MV.	
MAX. MV. DROP AT 10A		15 MV.

DIMENSION CLASSIFICATION	
SYMBOL	DESCRIPTION
▲	CRITICAL

CAT NO.	L	L1	E	W	H	H1	F	G	G1	C1	C2	C3	I1	I2	I3	C	S	D	L2	W1	W2	P	B	T
TOLERANCE	+0.3 -0.3	+0.2 -0.2	+0.2 -0.2	+0.15 -0.15	+0.1 -0.1	+0.2 -0.2	+0.0 -0.3	+0.05 -0.05	+0.2 -0.1	+0.3 -0.3	+0.3 -0.3	+0.1 -0.1	+0.3 -0.3	+0.3 -0.3	+0.1 -0.1	+0.05 -0.05	+0.02 -0.02	+0.3 -0.3	+0.5 -0.5	+0.1 -0.1	+0.1 -0.1	+0.05 -0.05	+0.00 -0.15	+0.02 -0.02
TT-1013	18.7	10.9	7.50	7.50	2.95	4.30	7.00	0.55	0.80	4.40	5.50	4.10	6.40	6.20	2.20	0.20	0.08	0.60	4.50	1.80	1.90	21.0	2.30	0.32

NOTES:-

MATERIAL	70/30 BRASS
FINISH	NATURAL
THICKNESS	0.32 ± 0.02
HARDNESS IN VPN	130 - 160

TT-1013

**CONTROLLED COPY
TTPL**

TERMINAL PITCH 21.00^{+0.05}/_{-0.05}

PLATING THICKNESS:- 1.50 MICRON MIN. IN CASE OF PLATING
TERMINAL INSERTION FORCE INTO COUPLER:- 2.00KG. MA.X
TERMINAL WITHDRAWAL FORCE FROM COUPLER:- 6.00 KG. MIN.

01	C1 , I1 , C , S	4.6 , 6.6 , NOT SHOWN	4.40 ^{+0.30} / _{0.30} , 6.40 ^{+0.30} / _{0.30} , 0.20 , 0.08	10-9-03	BN	BN	37 F
01	TOL. E , W , H	± 0.10	+0.20 -0.20 , +0.15 -0.15 , +0.10 -0.15	10-9-03	BN	BN	37 F
REV. NO.	AL. NO.	WAS	CHANGED TO	DATE	NAME	CHD. BY.	ECN NO.
GEN TOL.	CAT NO	TAB SIZE	CABLE SIZE	ALL DIMENSIONS IN MM			
0-10 ± 0.10	TT-1013	6.30 X 0.80	2.0-3.0 mm ²				
10-30 ± 0.20	DRN BY	CHECKED BY	APPROVED BY DATE	FILENAME	DATE	SCALE	
	VENU	SANTOSH	SUJESH	Tf-1013	19-10-96	3:1	
30-100 ± 0.30	TT			SNAP ON FEMALE TERMINAL			
100-300 ± 0.50	TERMINAL TECHNOLOGIES (I) PVT. LTD.			DRAWING_NUMBER	D/TT/53,R01	SHEET	1 OF 1