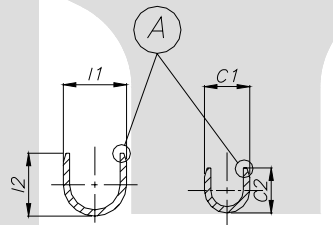


DETAIL B

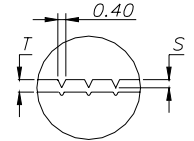
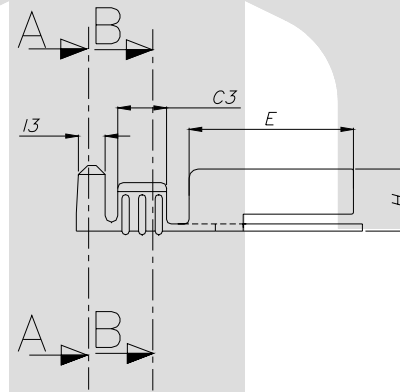
DESCRIPTION	AT 1ST INSERTION	AT 10TH WITHDRAWAL
PUSH LOAD MAX.	N A	
PULL LOAD MIN.		N A
MAX. MV. DROP	N A	
MAX. MV. DROP		N A

DIMENSION CLASSIFICATION	
SYMBOL	DESCRIPTION
▲	CRITICAL

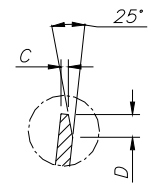


SECTION A-A

SECTION B-B



SECTION D-D



DETAIL A

CAT NO.	L	F	H	E	W	W1	G	ØD	C1	C2	C3	I1	I2	I3	S	C	D	P	B	T
TOLERANCE	+0.3 -0.3	+0.0 -0.4	+0.2 -0.2	+0.2 -0.3	+0.2 -0.2	+0.2 -0.2	+0.1 -0.1	+0.1 -0.1	+0.2 -0.2	+0.3 -0.3	+0.1 -0.1	+0.2 -0.2	+0.3 -0.3	+0.1 -0.1	+0.04 -0.04	+0.1 -0.1	+0.3 -0.3	+0.05 -0.05	+0.00 -0.15	+0.02 -0.02
TT- 1501	16.0	7.00	3.70	9.50	4.00	4.20	1.00	1.40	2.90	3.20	2.70	4.20	4.00	1.70	0.10	0.25	0.60	18.0	2.00	0.40

**CONTROLLED COPY  
TTPL**

NOTES:-

MATERIAL	70/30 BRASS
FINISH	NATURAL
THICKNESS	0.40 <sup>+0.02</sup>
HARDNESS IN VPN	130 - 160

TT-1501

TERMINAL PITCH 18.00<sup>+0.05</sup>/<sub>-0.05</sub>

PLATING THICKNESS:- 1.50 MICRON MIN. IN CASE OF PLATING  
 TERMINAL INSERTION FORCE INTO COUPLER:- 3.0KG. MAX.  
 TERMINAL WITHDRAWAL FORCE FROM COUPLER:- 6.00 KG. MIN.

01	G	1.50	1.00	14/06/04	BN	BN	90
REV. NO.	AL. NO.	WAS	CHANGED TO	DATE	NAME	CHD. BY.	ECN NO.
GEN. TOL.	CAT NO	TAB SIZE	CABLE SIZE	ALL DIMENSIONS ARE IN MM			
0-10 ±0.10	TT-1501	----	1.00 mm <sup>2</sup>	MATERIAL		BRASS 70/30	
10-30 ±0.20	DRN BY	CHECKED BY	APPROVED BY DATE	FILENAME	DATE	SCALE	
30-100 ±0.30	venu	SANTOSH	SUJESH	Tt-1501	15-12-01	3:1	
100-300 ±0.50			BULB TERMINAL				
TERMINAL TECHNOLOGIES (I) PVT. LTD.			DRAWING_NUMBER	D/TT/224.R01	SHEET 1 OF 1		

ISSUE NO-1/17-10-02