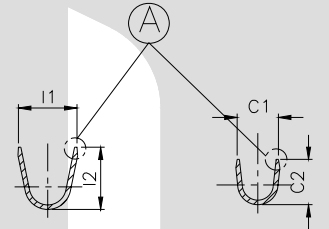
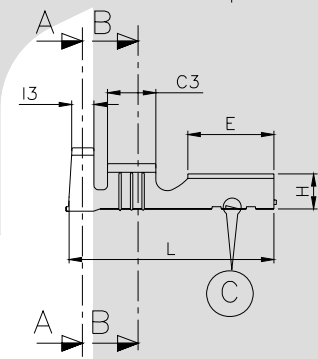


TERMINAL TO TERMINAL (FEMALE WITH MALE) (TT-1515 WITH 5.2 X 0.50mm MALE)		
DESCRIPTION	AT 1ST INSERTION	AT 10TH WITHDRAWAL
PUSH LOAD MAX.	4.50 KG.	
PULL LOAD MIN.		1.50 KG.
MAX. MV. DROP AT 6A	10 MV.	
MAX. MV. DROP AT 6A		15 MV.



DIMENSION SYMBOL	CLASSIFICATION DESCRIPTION
▲	CRITICAL



CONTROLLED COPY
TTPL

CAT NO.	L	E	W	G	H	C1	C2	I1	I2	C3	I3	D1	C	S	D	L1	H1	P	B
TOLERANCE	+0.3 -0.3	+0.15 -0.2	+0.1 -0.1	+0.05 -0.05	+0.2 -0.1	+0.2 -0.2	+0.3 -0.3	+0.2 -0.2	+0.3 -0.3	+0.1 -0.1	+0.1 -0.1	+0.15 -0.15	+0.1 -0.1	+0.2 -0.2	+0.3 -0.3	+0.1 -0.1	+0.05 -0.05	+0.05 -0.05	+0.0
TT-1515	15.5	6.30	6.40	0.40	2.40	3.40	3.60	4.70	4.80	3.20	2.00	3.80	0.20	0.08	0.50	1.20	0.15	17.5	2.00

NOTES:-

MATERIAL	70/30 BRASS
FINISH	NATURAL
THICKNESS	0.35 ^{+0.02}
HARDNESS IN VPN	130 - 160

TT-1515

TERMINAL PITCH 17.50^{+0.05}/_{-0.05}
 PLATING THICKNESS:- 1.50 MICRON MIN. IN CASE OF PLATING
 TERMINAL INSERTION FORCE INTO COUPLER:- 2.50KG.MAX.
 TERMINAL WITHDRAWAL FORCE INTO COUPLER:- 6.00.KG.MIN.

02	P, B	--	New Dimension Added.				07/02/06	AM	PSB	129			
01	Tol. H, C, D, S	+0.1 -0.1	+0.05 -0.05	+0.2 -0.2	+0.1 -0.1	+0.2 -0.1	+0.1 -0.1	+0.3 -0.3	+0.02 -0.02	10-4-04	AM	BN	55
REV. NO.	AL. NO.	WAS				CHANGED TO				DATE	NAME	CHD. BY.	ECN NO.
GEN TOL.	CAT NO	TAB SIZE		CABLE SIZE		ALL DIMENSIONS ARE IN MM							
0-10	TT-1515	5.2 X 0.50		0.75 - 1.5 mm ²									
10-30	DRN BY	CHECKED BY	APPROVED BY DATE	FILENAME	DATE	SCALE							
	VENU	SANTOSH	SUJESH	TT-1515	08-03-04	2:1							
30-100	TT		SNAP ON FEMALE DIMPLE TERMINAL										
100-300			TERMINAL TECHNOLOGIES (I) PVT. LTD.		DRAWING_NUMBER	D/TT/250.R02	SHEET	1 OF 1					