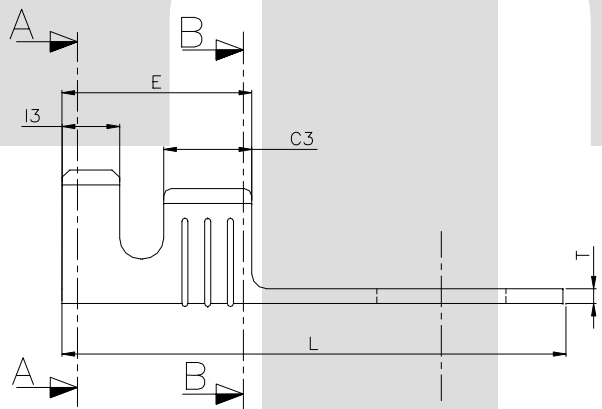
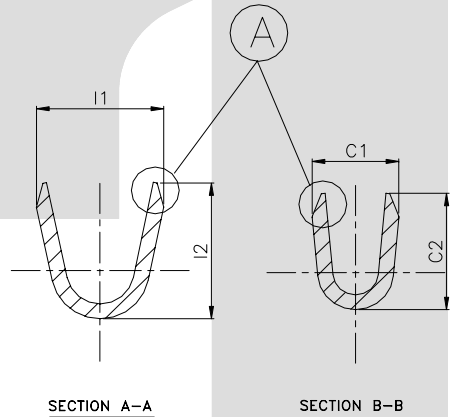


DIMENSION CLASSIFICATION	
SYMBOL	DESCRIPTION
▲	CRITICAL

DESCRIPTION	AT 1ST INSERTION	AT 10TH WITHDRAWAL
PUSH LOAD MAX.	N A	
PULL LOAD MIN.		N A
MAX. MV. DROP AT 10A	N A	
MAX. MV. DROP AT 10A		N A



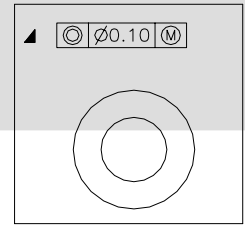
CAT NO.	L	øD	ød	T	C1	C2	C3	I1	I2	I3	D	S	C	P	B
TOLERANCE	+0.20 -0.20	+0.05 -0.15	+0.10 -0.10	+0.02 -0.02	+0.20 -0.20	+0.30 -0.30	+0.10 -0.10	+0.20 -0.20	+0.30 -0.30	+0.10 -0.10	+0.50 -0.30	+0.05 -0.05	+0.30 -0.30	+0.05 -0.05	+0.00 -0.10
TT-1516	33.0	16.0	8.40	1.00	7.00	7.30	6.40	9.10	9.10	3.70	1.20	0.20	0.50	35.0	2.00

CONTROLLED COPY
TTPL

NOTES:-

MATERIAL	BRASS
FINISH	NATURAL
THICKNESS	1.00 ^{+0.02}
HARDNESS IN VPN	115 - 135

TT-1516



TERMINAL PITCH 35.00 ^{+0.05}/_{-0.05}
 PLATING THICKNESS:- 1.50 MICRON MIN. IN CASE OF PLATING
 TERMINAL INSERTION FORCE INTO COUPLER:- NA
 TERMINAL WITHDRAWL FORCE INTO COUPLER:- NA

REV. NO.	AL. NO.	WAS	CHANGED TO	DATE	NAME	CHD. BY.
GEN. TOL.	CAT. NO.	CABLE SIZE	ALL DIMENSIONS ARE IN MM			
0-10 ±0.10	TT-1516	4.5 - 8.5mm ²				
10-30 ±0.20	DRN. BY VENU	CHECKED BY SANTOSH	APPROVED BY DATE SUJESH	FILENAME Tf-1516	DATE 07-03-04	SCALE 3:1
30-100 ±0.30	TT			RING TERMINAL		
100-300 ±0.50	TERMINAL TECHNOLOGIES (I) PVT. LTD.			DRAWING_NUMBER	D/TT/251.R0	SHEET 1 OF 1