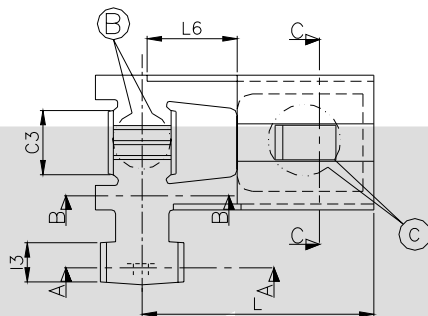
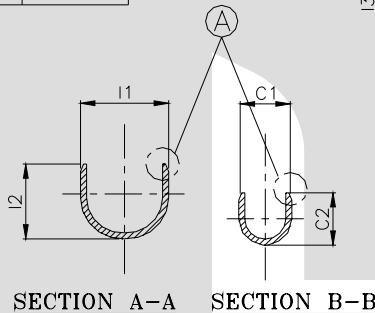


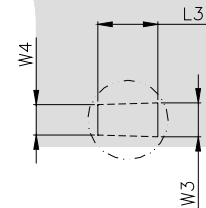
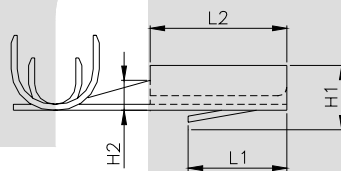
TERMINAL TO TERMINAL (FEMALE WITH MALE)  
( TT-1555 WITH 7.60 X 0.80 MALE)

DESCRIPTION	AT 1ST INSERTION	AT 10TH WITHDRAWAL
PUSH LOAD MAX.	3.0 KG.	
PULL LOAD MIN.		1.0 KG.
MAX. MV. DROP AT 20A	10 MV.	
MAX. MV. DROP AT 20A		15 MV.

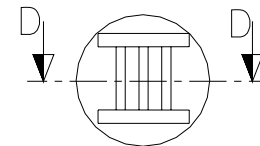
DIMENSION CLASSIFICATION	
SYMBOL	DESCRIPTION
▲	CRITICAL



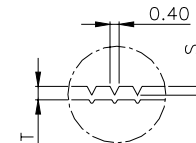
SECTION C-C



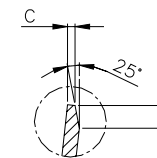
DETAIL C



DETAIL B



SECTION D-D



DETAIL A

CAT. NO.	L	W	W1	W2	G	H	H1	L1	I1	I2	I3	C1	C2	C3	L2	C	S	D	L3	L4	L5	W3	W4	W5	P	H2	L6
TOLERANCE	+0.3 -0.3	+0.3 -0.3	+0.15 -0.2	+0.1 -0.1	+0.05 -0.05	+0.1 -0.2	+0.2 -0.2	+0.2 -0.2	+0.2 -0.2	+0.3 -0.3	+0.1 -0.1	+0.2 -0.2	+0.3 -0.3	+0.1 -0.1	+0.15 -0.15	+0.1 -0.1	+0.04 -0.04	+0.3 -0.3	+0.15 -0.15	+0.15 -0.15	+0.15 -0.15	+0.2 -0.2	+0.2 -0.2	+0.2 -0.2	+0.05 -0.05	+0.2 -0.2	+0.5 -0.2
TT- 1555	15.3	2.60	9.00	2.30	0.55	3.30	4.70	6.40	6.00	4.80	2.30	3.60	3.50	3.60	8.80	0.2	0.10	0.60	4.50	3.6	4.80	2.40	2.20	5.90	23.2	2.50	6.00

NOTES:-

MATERIAL	70/30 BRASS
FINISH	NATURAL
THICKNESS	±0.02
HARDNESS IN VPN	130 - 160

**CONTROLLED COPY**  
**TTPL**

TT-1555

TERMINAL PITCH 23.2 <sup>+0.05</sup>/<sub>-0.05</sub>

PLATING THICKNESS:- 1.50 MICRON MIN.IN CASE OF PLATING

TERMINAL INSERTION FORCE INTO COUPLER - 2 KG MAX ▲  
TERMINAL WITHDRAWAL FORCE FROM COUPLER - 6 KG MIN ▲

04	H2 , L6	NOT SHOWN	SHOWN ( 2.50 , 6.00 )	19/07/04	AM	BN	106
03	-	TT-1855 (FOR DELPHI)	TT-1555	18/5/04	AM	BN	86
03	S , G	0.25 <sup>+0.05</sup> / <sub>-0.10</sub> , 0.65	0.10 <sup>+0.04</sup> / <sub>-0.04</sub> , 0.55	18/5/04	AM	BN	86
02	W5 ,L4 ,L5,D	5.6 <sup>+0.2</sup> / <sub>-0.2</sub> & 5.8 <sup>+0.3</sup> / <sub>-0.3</sub> , 3.0 <sup>+0.15</sup> / <sub>-0.15</sub> , 4.5 <sup>+0.15</sup> / <sub>-0.15</sub> , 0.50 <sup>+0.15</sup> / <sub>-0.15</sub>	5.90 <sup>+0.3</sup> / <sub>-0.3</sub> , 3.6 <sup>+0.2</sup> / <sub>-0.2</sub> , 4.80 <sup>+0.2</sup> / <sub>-0.2</sub> , 0.60 <sup>+0.1</sup> / <sub>-0.1</sub>	10-4-04	AM	BN	72
02	W,L1,C1,I3,C3	2.50 <sup>+0.2</sup> / <sub>-0.2</sub> , 6.40 <sup>+0.15</sup> / <sub>-0.15</sub> , 3.80 <sup>+0.3</sup> / <sub>-0.3</sub> , 2.80 <sup>+0.15</sup> / <sub>-0.15</sub> , 3.75 <sup>+0.15</sup> / <sub>-0.15</sub>	2.60 <sup>+0.3</sup> / <sub>-0.3</sub> , 6.40 <sup>+0.2</sup> / <sub>-0.2</sub> , 3.60 <sup>+0.2</sup> / <sub>-0.2</sub> , 2.30 <sup>+0.1</sup> / <sub>-0.1</sub> , 3.60 <sup>+0.1</sup> / <sub>-0.1</sub>	10-4-04	AM	BN	72
01	L2,L3,C,S	NOT SHOWN	8.80 , 4.50 , 0.20 , 0.25,	25-12-03	BN	BN	50
01	L,I3,H1,W,I2,H	18.5 , 2.3 , 5 , 2.3 , 5.0,3,2	15.3,2.8,4,7,2.50,4.80,3,30	25-12-03	BN	BN	50

REV.NO.	AL. NO.	WAS	CHANGED TO	DATE	NAME	CHD.BY.	ECN NO.
---------	---------	-----	------------	------	------	---------	---------

GEN TOL.	CAT.NO.	TAB SIZE	CABLE SIZE	ALL DIMENSIONS ARE IN MM			
0-10 ±0.10	TT-1555	7.60X0.80	0.75 - 2.50mm <sup>2</sup>				
10-30 ±0.20	DRN BY VENU	CHECKED BY SANTOSH	APPROVED_BY_DATE SUJESH	FILENAME TT-1555	DATE 01-09-99	SCALE 3:1	
30-100 ±0.30	<b>TT</b> TERMINAL TECHNOLOGIES (I) PVT. LTD.			SIDE FLAG TERMINAL			
100-300 ±0.50				DRAWING_NUMBER	D/TT/268/R04	SHEET 1 OF 1	