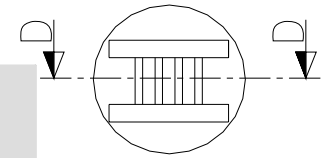
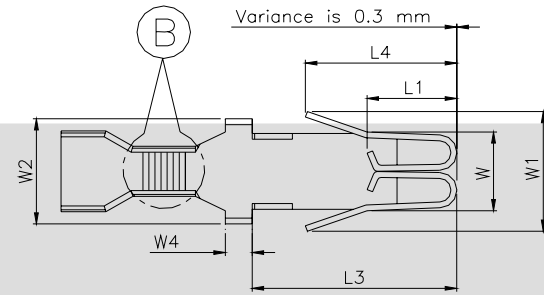
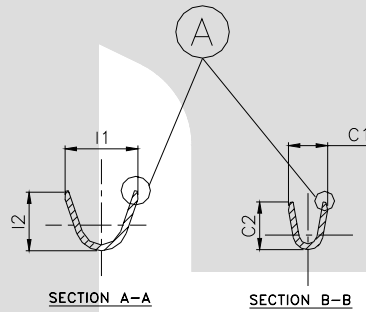
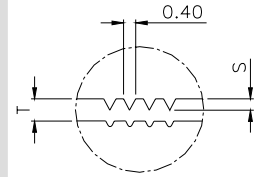


DESCRIPTION	AT 1ST INSERTION	AT 10TH WITHDRAWAL
PUSH LOAD MAX.	NA	
PULL LOAD MIN.		NA
MAX. MV. DROP	N A	
MAX. MV. DROP		N A

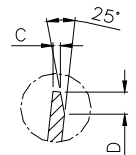
DIMENSION SYMBOL	CLASSIFICATION DESCRIPTION
▲	CRITICAL



DETAIL B



SECTION D-D



DETAIL A

CAT. NO.	L	L1	L2	L3	L4	E	W	W1	W2	H	H1	C1	C2	C3	I1	I2	I3	R	S	C	D	P	φd1	H2	W3	H4	W4	
TOLERANCE	+0.3 -0.3	+0.5 -0.1	+0.2 -0.2	+0.3 -0.2	+0.1 -0.2	+0.2 -0.2	+0.2 -0.1	+0.15 -0.3	+0.15 -0.15	+0.2 -0.2	+0.1 -0.2	+0.2 -0.2	+0.3 -0.3	+0.1 -0.1	+0.3 -0.3	+0.1 -0.1	+0.3 -0.3	+0.1 -0.1	+0.15 -0.0	+0.04 -0.04	+0.1 -0.1	+0.3 -0.3	+0.05 -0.05	+0.1 -0.1	+0.3 -0.3	+0.1 -0.2	+0.1 -0.1	+0.15 -0.1
TT- 1556	26.5	6.00	9.00	13.2	9.9	15.6	5.20	8.00	7.30	3.50	4.10	4.40	3.70	4.25	5.70	4.80	2.70	1.10	0.10	0.25	0.50	15.0	2.00	32.0	3.50	3.30	1.80	

NOTES:-

MATERIAL	70/30 BRASS
FINISH	TIN
THICKNESS	0.40 <sup>+0.02</sup>
HARDNESS IN VPN	130-160

**CONTROLLED COPY**  
**TTPL**

TT-1556

TERMINAL PITCH 15.00<sup>+0.05</sup>/<sub>-0.05</sub>

PLATING THICKNESS:- 1.50 MICRON MIN. IN CASE OF PLATING  
 TERMINAL INSERTION FORCE INTO COUPLER:- 2.50KG.MAX.  
 TERMINAL WITHDRAWAL FORCE INTO COUPLER:- 6.00.KG.MIN.

07	W4 & Profile	NOT SHOWN	SHOWN ( Critical Dimn.)	25/02/06	AM	VENU	185-A		
06	L4	NOT SHOWN	SHOWN	11/02/06	AM	VENU	184-A		
05	Tol. I1 , C1	+/- 0.20 , 3.40	+/- 0.30 , 4.40	20/11/05	AM	VENU	180		
04	H4	NOT SHOWN	SHOWN	19/09/05	AM	VENU	175		
03	NECK HEIGHT	IMPROVED	R = 1.10 <sup>+0.15</sup> / <sub>-0.0</sub>	25/07/05	AM	VENU	170		
02	C1 , I1 , C3	3.70 , 6.70 , 4.20	3.40 , 5.70 , 4.25	02/06/05	AM	VENU	157		
01	NO. OF SERRATION LINES	3 NOS	4 NOS	21-03-05	AM	VENU	141		
01	W , Tol. H1	5.40 , ± 0.1	5.20 <sup>+0.1</sup> / <sub>-0.2</sub>	21-03-05	AM	VENU	141		
REV.NO.	AL. NO.	WAS		CHANGED TO		DATE	NAME	CHD.BY.	ECN NO.
GEN.TOL.	CAT.NO.	TAB SIZE	CABLE SIZE	ALL DIMENSIONS ARE IN MM					
0-10	± 0.10	TT-1556	NA	1.0 - 2.0 mm <sup>2</sup>					
10-30	± 0.20	DRN BY VENU	CHECKED BY SANTOSH	APPROVED_BY_DATE SUJESH	FILENAME T1-1556	DATE 24-07-01	SCALE 3:1		
30-100	± 0.30	<b>TT</b>		FUSE TERMINAL					
100-300	± 0.50			TERMINAL TECHNOLOGIES (I) PVT. LTD.	DRAWING_NUMBER	D/TT/291.R07	SHEET 1 OF 1		