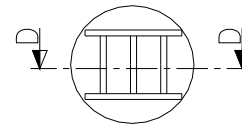
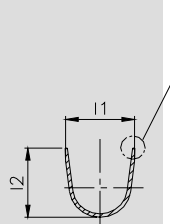


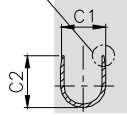
SECTION C-C



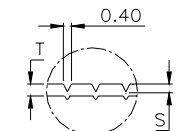
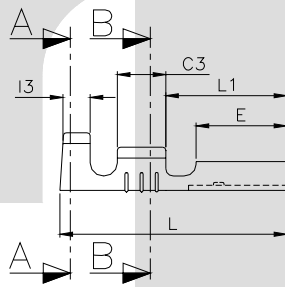
DETAIL B



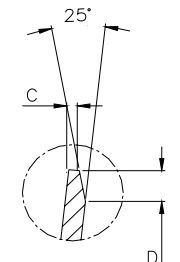
SECTION A-A



SECTION B-B



SECTION D-D



DETAIL A

TERMINAL TO TERMINAL (MALE & FEMALE) (2.80 X 0.50 MALE & TT-1696)		
DESCRIPTION	AT 1ST INSERTION	AT 10TH WITHDRAWAL
PUSH LOAD MAX.	3.0 KG	
PULL LOAD MIN.		1.0 KG
MAX. MV. DROP AT 4.0A	10 MV.	
MAX. MV. DROP AT 4.0A		15 MV.

DIMENSION CLASSIFICATION	
SYMBOL	DESCRIPTION
▲	CRITICAL

CAT NO.	L	L1	F	H	H1	G	G1	W	E	C1	C2	C3	I1	I2	I3	C	S	D	P	B	T
TOLERANCE	+0.3 -0.3	+0.2 -0.2	+0.1 -0.3	+0.1 -0.1	+0.05 -0.05	+0.05 -0.00	+0.1 -0.1	+0.1 -0.1	+0.15 -0.15	+0.2 -0.2	+0.3 -0.3	+0.1 -0.1	+0.2 -0.2	+0.3 -0.3	+0.1 -0.1	+0.05 -0.05	+0.02 -0.02	+0.3 -0.3	+0.05 -0.05	+0.0 -0.15	+0.02 -0.02
TT- 1696	15.0	8.50	5.25	1.95	0.15	0.40	0.85	3.90	6.25	2.50	2.50	3.10	4.00	4.00	2.10	0.15	0.07	0.50	17.5	2.50	0.25

**CONTROLLED COPY
TTPL**

NOTES:-

MATERIAL	70/30 BRASS
FINISH	NATURAL
THICKNESS	0.25 ^{±0.02}
HARDNESS IN VPN	130 - 160

TT-1696

TERMINAL PITCH 17.50^{+0.05}/_{-0.05}

PLATING THICKNESS:- 1.50 MICRON MIN. IN CASE OF PLATING
 TERMINAL INSERTION FORCE INTO COUPLER:- 1.50KG.MAX.
 TERMINAL WITHDRAWL FORCE INTO COUPLER:- 6.00KG.MIN.

AL. NO.	WAS	CHANGED TO	DATE	NAME	CHD. BY.
GEN.TOL.	CAT.NO.	TAB SIZE	CABLE SIZE	ALL DIMENSIONS ARE IN MM	
0-10 ±0.10	TT-1696	2.80 X 0.50	1.00 mm ²		
10-30 ±0.20	DRN BY VENU	CHECKED BY SANTOSH	APPROVED BY DATE SUJESH	FILENAME Tt-1696	DATE 25-09-02
30-100 ±0.30				SNAP ON FEMALE TERMINAL	
100-300 ±0.50				TERMINAL TECHNOLOGIES (I) PVT. LTD.	DRAWING_NUMBER

ISSUE NO-1/17-10-02