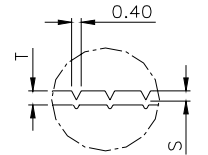
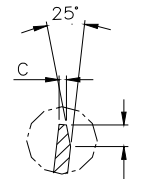


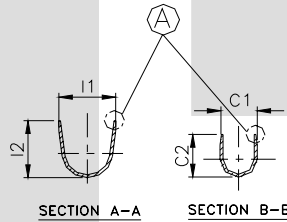
DETAIL B



SECTION D-D



DETAIL A



SECTION A-A

SECTION B-B

TERMINAL TO TERMINAL (MALE & FEMALE) (2.80 X 0.80 MALE & TT-1698)		
DESCRIPTION	AT 1ST INSERTION	AT 10TH WITHDRAWAL
PUSH LOAD MAX.	3.0 KG	
PULL LOAD MIN.		1.0 KG
MAX. MV. DROP AT 4.0A	10 MV.	
MAX. MV. DROP AT 4.0A		15 MV.

DIMENSION CLASSIFICATION	
SYMBOL	DESCRIPTION
▲	CRITICAL

CAT NO.	L	L1	F	H	H1	G	G1	W	E	C1	C2	C3	I1	I2	I3	C	S	D	P	B	T
TOLERANCE	+0.3 -0.3	+0.2 -0.2	+0.0 -0.4	+0.2 -0.2	+0.05 -0.05	+0.05 -0.05	+0.1 -0.1	+0.1 -0.1	+0.15 -0.15	+0.2 -0.2	+0.3 -0.3	+0.1 -0.1	+0.2 -0.2	+0.3 -0.3	+0.1 -0.1	+0.05 -0.05	+0.02 -0.02	+0.3 -0.3	+0.05 -0.05	+0.0 -0.15	+0.02 -0.02
TT- 1698	15.0	8.50	4.00	2.10	0.15	0.70	0.85	3.90	6.25	2.50	2.50	3.10	4.00	4.00	2.10	0.15	0.07	0.50	17.5	2.50	0.25

CONTROLLED COPY
TTPL

NOTES:-

MATERIAL	70/30 BRASS
FINISH	NATURAL
THICKNESS	0.25 ± 0.02
HARDNESS IN VPN	130 - 160

TT-1698

TERMINAL PITCH 17.50 ^{+0.05}/_{-0.05}

PLATING THICKNESS:- 1.50 MICRON MIN. IN CASE OF PLATING
TERMINAL INSERTION FORCE INTO COUPLER:- 1.50KG.MAX.
TERMINAL WITHDRAWL FORCE INTO COUPLER:- 6.00KG.MIN.

AL. NO.	WAS	CHANGED TO	DATE	NAME	CHD. BY.
GEN. TOL.	CAT. NO.	TAB SIZE	CABLE SIZE	ALL DIMENSIONS ARE IN MM	
0-10 ± 0.10	TT-1698	2.8. X 0.80	1.00 mm ²		
10-30 ± 0.20	DRN BY	CHECKED BY	APPROVED BY DATE	FILENAME	DATE
	VENU	SANTOSH	SUJESH	Tt-1698	19-01-1997
30-100 ± 0.30	TT			SNAP ON FEMALE TERMINAL	
100-300 ± 0.50	TERMINAL TECHNOLOGIES (I) PVT. LTD.			DRAWING_NUMBER	SHEET
				D/TT/41,RO	1 OF 1