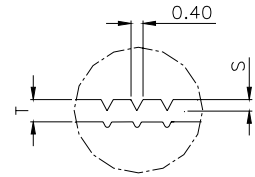
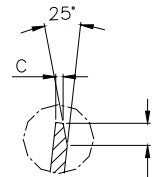


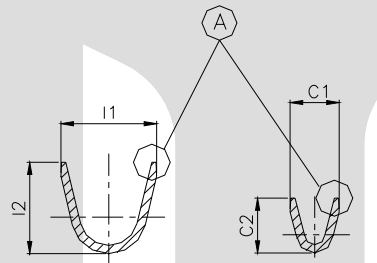
DETAIL B



SECTION D-D

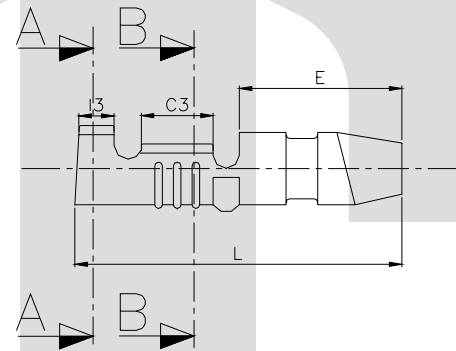


DETAIL A



SECTION A-A

SECTION B-B



TERMINAL TO TERMINAL (MALE & FEMALE) ( ø 3.96 FEMALE & TT-1708)		
DESCRIPTION	AT 1ST INSERTION	AT 10TH WITHDRAWAL
PUSH LOAD MAX.	4.0 KG	
PULL LOAD MIN.		2.0 KG
MAX. MV. DROP AT 10A	10 MV.	
MAX. MV. DROP AT 10A		15 MV.

DIMENSION CLASSIFICATION	
SYMBOL	DESCRIPTION
▲	CRITICAL

CAT. NO.	L	E	C1	C2	C3	I1	I2	I3	øD	ød	ød1	S	C	D	P	B
TOLERANCE	+0.3 -0.3	+0.3 -0.3	+0.2 -0.2	+0.2 -0.0	+0.1 -0.1	+0.2 -0.2	+0.3 -0.3	+0.1 -0.1	+0.05 -0.05	+0.10 -0.10	+0.10 -0.10	+0.04 -0.04	+0.05 -0.05	+0.3 -0.3	+0.05 -0.05	+0.0
TT- 1708	17.8	9.00	3.50	3.30	3.50	3.80	4.00	2.85	3.96	3.00	3.60	0.10	0.40	0.60	20.0	2.20

NOTES:-

MATERIAL	70/30 BRASS
FINISH	NATURAL
THICKNESS	±0.02 0.50
HARDNESS IN VPN	115 - 135

TT-1708

TERMINAL PITCH 20.00 ±0.05

**CONTROLLED COPY  
TTPL**

01	C1 & C2	3.0	3.50 & 3.30	25-11-02	VENU	VENU	05
REV. NO.	AL. NO.	WAS	CHANGED TO	DATE	NAME	CHD. BY	ECN NO.
GEN TOL	CAT. NO.	TAB SIZE	CABLE SIZE	ALL DIMENSIONS ARE IN MM			
0-10 ±0.10	TT-1708	ø3.96	0.50 - 1.0 mm <sup>2</sup>				
10-30 ±0.20	DRN BY VENU	CHECKED BY SANTOSH	APPROVED BY DATE SUJESH	FILENAME Tt-1708	DATE 28-03-02	SCALE 3:1	
30-100 ±0.30				BULLET MALE			
100-300 ±0.50				TERMINAL TECHNOLOGIES (I) PVT. LTD.	DRAWING_NUMBER	D/TT/121.R01	SHEET 1 OF 1

ISSUE NO-1/17-10-02