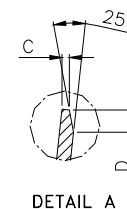
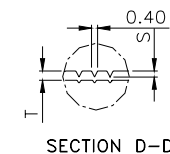
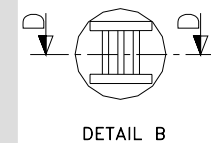
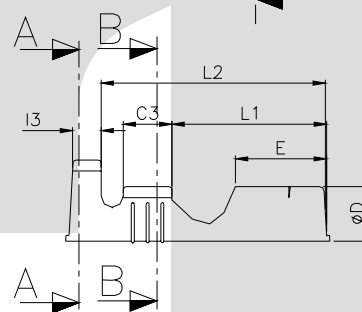
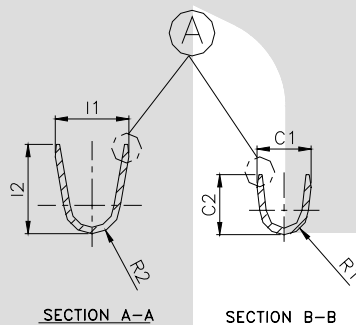


TERMINAL TO TERMINAL (MALE & FEMALE) (Ø 3.96 MALE & TT-1725)		
DESCRIPTION	AT 1ST INSERTION	AT 10TH WITHDRAWAL
PUSH LOAD MAX.	5.0	
PULL LOAD MIN.		2.00 KG
MAX. MV. DROP	10 MV.	
MAX. MV. DROP		15 MV.

DIMENSION CLASSIFICATION	
SYMBOL	DESCRIPTION
▲	CRITICAL



CAT. NO.	L	E	C1	C2	I1	I2	C3	I3	H	G	L1	ØD	L2	F	d	R1	R2	C	S	D	P	B	T
TOLERANCE	+0.3 -0.3	+0.15 -0.15	+0.1 -0.1	+0.3 -0.3	+0.2 -0.2	+0.3 -0.3	+0.1 -0.1	+0.1 -0.1	+0.1 -0.05	+0.3 -0.2	+0.3 -0.3	+0.2 -0.05	+0.3 -0.3	+0.2 -0.2	+0.2 -0.05	+0.2 -0.1	+0.2 -0.1	+0.1 -0.1	+0.04 -0.04	+0.3 -0.3	+0.05 -0.05	+0.00 -0.10	+0.02 -0.02
TT- 1725	17.5	6.50	3.20	3.20	4.20	3.70	3.30	2.40	0.15	0.80	10.0	4.60	15.3	3.20	3.70	1.60	1.75	0.25	0.10	0.50	20.0	2.50	0.40

NOTES:-

MATERIAL	70/30 BRASS
FINISH	TIN
THICKNESS	0.40 ^{±0.02}
HARDNESS IN VPN	130 - 160

TT-1725

**CONTROLLED COPY
TTPL**

TERMINAL PITCH 20.0^{+0.05}/_{-0.05}

GO :- Ø3.60 MM PIN GAUGE, ▲

NO GO :- Ø3.80 MM PIN GAUGE ▲

PLATING THICKNESS:- 1.50 MICRON MIN. IN CASE OF PLATING

04	Tol. d	+0.1 / -0.1	+0.2 / -0.05	01/08/06	AM	AM	188
03	C1, S	^{+0.2} _{-0.2} , ^{+0.05} _{-0.1}	^{+0.1} _{-0.1} , ^{+0.04} _{-0.04}	10-4-04	AM	BN	68
02	R1, R2	NOT SHOWN(0.50,1.75)		4-9-03	BN	BN	37
02	C1, I1, I2	2.50, 4.00, 4.30	3.40, 4.20, 3.70	4-9-03	BN	BN	37
01	I1	3.70	4.00	5-5-03	BN	BN	14
REV.NO.	AL. NO.	N/A		CHANGED TO	DATE	NAME	CHD.BY. ECN NO.
GEN TOL.	CAT.NO.	TAB SIZE	CABLE SIZE	ALL DIMENSIONS ARE IN MM			
0-10	±0.10	TT-1725	Ø3.96	0.50-1.00mm ²			
10-30	±0.20	DRN BY VENU	CHECKED BY SANTOSH	APPROVED_BY_DATE SUJESH	FILENAME TT-1725	DATE 28-13-02	SCALE 3:1
30-100	±0.30			BULLET FEMALE			
100-300	±0.50			TERMINAL TECHNOLOGIES (I) PVT. LTD.	DRAWING_NUMBER	D/TT/114, R04	SHEET 1 OF 1

ISSUE NO-1/17-10-02