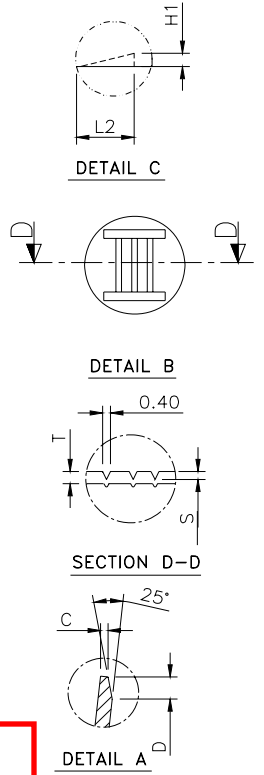
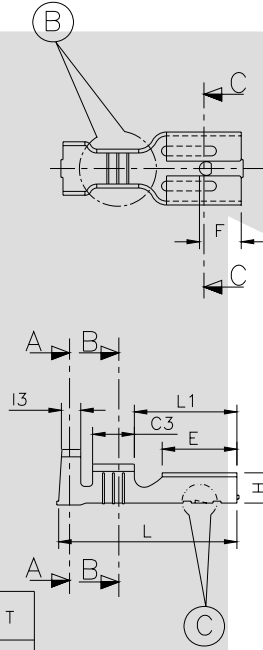
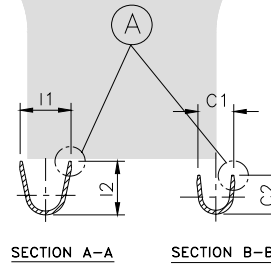


TERMINAL TO TERMINAL (MALE & FEMALE)
(6.30 X 0.80 MALE & TT-1731)

DESCRIPTION	AT 1ST INSERTION	AT 10TH WITHDRAWAL
PUSH LOAD MAX.	5.0 KG	
PULL LOAD MIN.		2.0 KG.
MAX. MV. DROP AT 10A	10 MV.	
MAX. MV. DROP AT 10A		15 MV.

DIMENSION CLASSIFICATION	
SYMBOL	DESCRIPTION
▲	CRITICAL



CAT NO.	L	E	W	H	G	G1	F	L1	C3	I3	C1	C2	I1	I2	C	S	D	L2	H1	P	B	T
TOLERANCE	+0.3 -0.3	+0.2 -0.2	+0.15 -0.15	+0.1 -0.1	+0.05 -0.05	+0.1 -0.3	+0.15 -0.15	+0.2 -0.2	+0.1 -0.1	+0.1 -0.1	+0.2 -0.2	+0.3 -0.3	+0.2 -0.2	+0.3 -0.3	+0.05 -0.05	+0.04 -0.04	+0.3 -0.3	+0.05 -0.05	+0.05 -0.05	+0.05 -0.05	+0.0 -0.15	+0.02 -0.02
TT-1731	18.7	7.50	7.50	3.10	0.61	1.80	4.20	10.3	4.30	2.20	3.10	3.10	4.50	4.50	0.25	0.10	0.60	1.40	0.20	21.0	2.30	0.40

**CONTROLLED COPY
TTPL**

NOTES:-

MATERIAL	70/30 BRASS
FINISH	NATURAL
THICKNESS	0.40 ^{+0.02}
HARDNESS IN VPV	130 - 160

TT-1731

TERMINAL PITCH 21.00^{+0.05}/_{-0.05}
 PLATING THICKNESS:- 1.50 MICRON MIN. IN CASE OF PLATING
 TERMINAL INSERTION FORCE INTO COUPLER:- 1.50KG.MAX.
 TERMINAL WITHDRAWAL FORCE INTO COUPLER:- 6.00.KG.MIN.

REV. NO.	AL. NO.	WAS	CHANGED TO	DATE	NAME	CHD. BY.
GEN TOL.	CAT NO.	TAB SIZE	CABLE SIZE	ALL DIMENSIONS ARE IN MM		
0-10 ±0.10	TT-1731	6.30 X 0.80	0.50-1.25mm ²			
10-30 ±0.20	DRN BY	CHECKED BY	APPROVED BY DATE	FILENAME	DATE	SCALE
	VENU	SANTOSH	SUJESH	TT-1731		2:1
30-100 ±0.30	TERMINAL TECHNOLOGIES (I) PVT. LTD.			FEMALE TERMINAL WITH DOUBLE LINE		SHEET 1 OF 1
100-300 ±0.50				DRAWING_NUMBER	D/TT/30,R0	

ISSUE NO-1/17-10-02