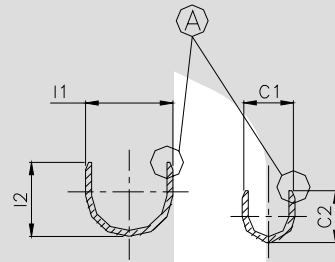


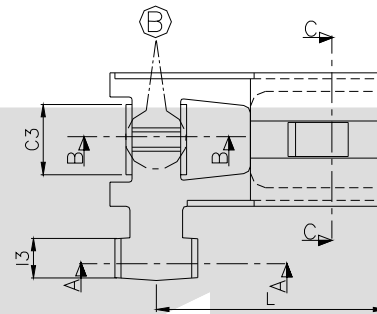
TERMINAL TO TERMINAL (FEMALE WITH MALE)
(TT-1755 WITH 7.60 X 0.80mm MALE)

DESCRIPTION	AT 1ST INSERTION	AT 10TH WITHDRAWAL
PUSH LOAD MAX.	3.0 KG.	
PULL LOAD MIN.		1.0 KG.
MAX. MV. DROP AT 20A	10 MV.	
MAX. MV. DROP AT 20A		15 MV.

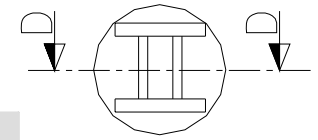
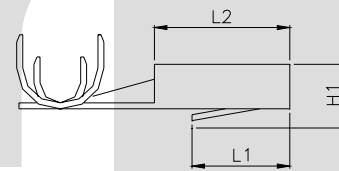


SECTION A-A SECTION B-B

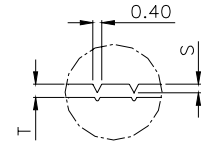
DIMENSION CLASSIFICATION	
SYMBOL	DESCRIPTION
▲	CRITICAL



SECTION C-C

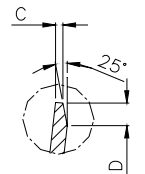


DETAIL B



SECTION D-D

**CONTROLLED COPY
TTPL**



DETAIL A

CAT. NO.	L	W	W1	W2	G	H	H1	L1	I1	I2	I3	C1	C2	C3	L2	C	S	D	L3	L4	W3	W4	W5	W6	P
TOLERANCE	+0.3 -0.3	+0.3 -0.3	+0.15 -0.15	+0.1 -0.1	+0.05 -0.05	+0.10 -0.20	+0.2 -0.2	+0.2 -0.2	+0.2 -0.2	+0.3 -0.3	+0.15 -0.15	+0.2 -0.2	+0.3 -0.3	+0.15 -0.15	+0.1 -0.1	+0.04 -0.04	+0.3 -0.3	+0.15 -0.15	+0.15 -0.15	+0.2 -0.2	+0.2 -0.2	+0.2 -0.2	+0.2 -0.2	+0.05 -0.05	
TT- 1755	15.3	2.60	9.00	2.30	0.65	3.30	4.60	6.40	4.20	3.80	2.70	3.00	2.90	3.80	8.80	0.25	0.10	0.50	3.50	4.90	4.50	5.20	5.60	5.80	23.2

NOTES:-

MATERIAL	70/30 BRASS
FINISH	NATURAL
THICKNESS	0.40 ^{+0.02}
HARDNESS IN VPN	130 - 160

TT-1755

TERMINAL PITCH 23.2^{+0.05}_{-0.05}

PLATING THICKNESS:- 1.50 MICRON MIN. IN CASE OF PLATING
TERMINAL INSERTION FORCE INTO COUPLER - 2 KG MAX ▲
TERMINAL WITHDRAWAL FORCE FROM COUPLER - 6 KG MIN ▲

02	L3 , L4	3.00 , 4.50	3.50 , 4.90	23/04/05	AM	PSB	150
01	L2,L3,C,S,D	NOT SHOWN	8.80,3.00,0.25,0.10,0.50	25-12-03	BN	BN	49
REV.NO.	AL. NO.	WAS	CHANGED TO	DATE	NAME	CHD.BY.	ECN NO.
GEN TOL.	CAT.NO.	TAB SIZE	CABLE SIZE	ALL DIMENSIONS ARE IN MM			
0-10	TT-1755	7.60X0.80	0.50-0.75 mm ²				
10-30	DRN BY VENU	CHECKED BY SANTOSH	APPROVED_BY_DATE SUJESH	FILENAME TT-1755	DATE 20-01-03	SCALE 3:1	
30-100				SIDE FLAG TERMINAL			
100-300				TERMINAL TECHNOLOGIES (I) PVT. LTD.	DRAWING_NUMBER	D/TT/178,R02	SHEET 1 OF 1

ISSUE NO-1/17-10-02