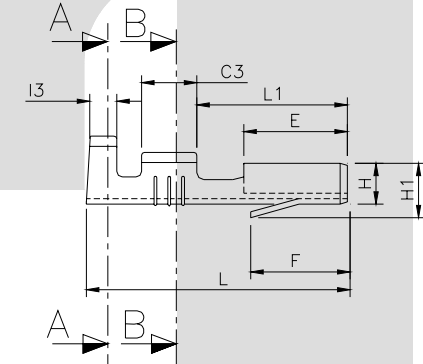
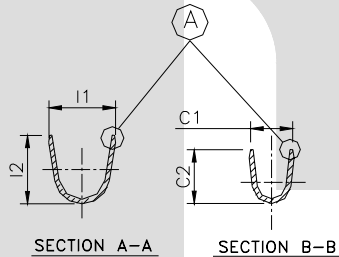


TERMINAL TO TERMINAL(MALE WITH FEMLE) (6.30 X 0.80 MALE WITH TT-1770)		
DESCRIPTION	AT 1ST INSERTION	AT 10TH WITHDRAWAL
PUSH LOAD MAX.	2.00 KG.	
PULL LOAD MIN.		0.80 KG.
MAX. MV. DROP AT 10A	10 MV.	
MAX. MV. DROP AT 10A		15 MV.

DIMENSION CLASSIFICATION	
SYMBOL	DESCRIPTION
▲	CRITICAL



CAT NO.	L	L1	E	W	H	H1	F	G	G1	C1	C2	C3	I1	I2	I3	D1	C	S	D	L2	W1	W2	P	B
TOLERANCE	+0.3 -0.3	+0.2 -0.2	+0.2 -0.2	+0.15 -0.15	+0.1 -0.1	+0.2 -0.2	+0.2 -0.2	+0.05 -0.05	+0.2 -0.1	+0.2 -0.2	+0.3 -0.3	+0.1 -0.1	+0.2 -0.2	+0.3 -0.3	+0.1 -0.1	+0.3 -0.3	+0.1 -0.1	+0.02 -0.02	+0.3 -0.3	+0.5 -0.5	+0.1 -0.1	+0.1 -0.1	+0.05 -0.05	+0.00 -0.15
TT-1770	18.85	10.9	7.50	7.50	2.95	4.30	7.30	0.55	0.80	2.80	2.80	4.10	4.30	3.80	2.30	0.50	0.15	0.08	0.60	4.50	1.80	1.90	21.0	2.15

NOTES:-

MATERIAL	70/30 BRASS
FINISH	NATURAL
THICKNESS	0.32 ±0.02
HARDNESS IN VPV	130 - 160

**CONTROLLED COPY
TTPL**

TT-1770

TERMINAL PITCH 21.00^{+0.05}/_{-0.05}
 PLATING THICKNESS:- 1.50 MICRON MIN. IN CASE OF PLATING
 TERMINAL INSERTION FORCE INTO COUPLER:- 1.50KG. MAX
 TERMINAL WITHDRAWAL FORCE FROM COUPLER:- 6.00 KG. MIN.

02	L , I1 , I3 , B	18.7 , 4.1 , 3.5 , 2.3	18.85 , 4.3 , 3.8 , 2.15	19/12/04	AM	BN	117
01	C1 , I1	TOLERANCE ± 0.50	TOLERANCE ± 0.20	19-2-03	PSB	BN	08 D
01	C2 , I2	TOLERANCE ± 0.50	TOLERANCE ± 0.30	19-2-03	PSB	BN	08 D
REV.NO.	AL. NO.	WAS	CHANGED TO	DATE	NAME	CHD.BY.	ECN No.
GEN TOL.	CAT NO.	TAB SIZE	CABLE SIZE	ALL DIMENSIONS IN MM			
0-10	TT-1770	6.30 X 0.80	0.50 - 1.00 mm ²				
10-30	DRN BY VENU	CHECKED BY SANTOSH	APPROVED BY DATE SUJESH	FILENAME Tf-1770	DATE 28-03-02	SCALE 2:1	
30-100				SNAP ON FEMALE TERMINAL			
100-300				TERMINAL TECHNOLOGIES (I) PVT. LTD.	DRAWING_NUMBER	D/TT/54.R02	SHEET 1 OF 1

ISSUE NO-1/17-10-02