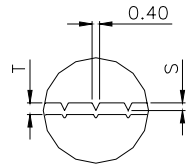
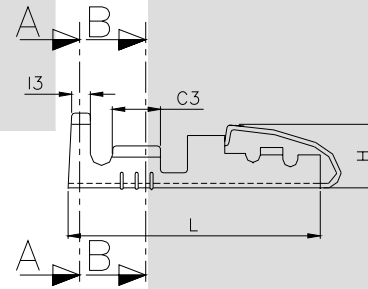
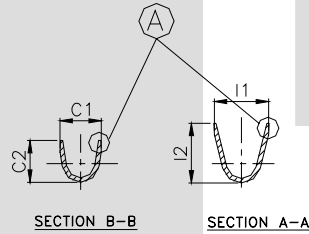


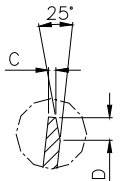
DETAIL B

DESCRIPTION	AT 1ST INSERTION	AT 10TH WITHDRAWAL
PUSH LOAD MAX.	NA	
PULL LOAD MIN.		NA
MAX. MV. DROP	NA	
MAX. MV. DROP		NA

DIMENSION CLASSIFICATION	
SYMBOL	DESCRIPTION
▲	CRITICAL



SECTION D-D



DETAIL A

CAT. NO.	L	L1	H	C1	C2	C3	I1	I2	I3	W	W1	C	S	D	P	$\phi d1$	T
TOLERANCE	+0.3 -0.3	+0.1 -0.1	+0.3 -0.2	+0.3 -0.3	+0.3 -0.3	+0.1 -0.1	+0.3 -0.3	+0.3 -0.3	+0.1 -0.1	+0.2 -0.1	+0.1 -0.05	+0.05 -0.05	+0.04 -0.04	+0.3 -0.3	+0.05 -0.05	+0.10 -0.10	+0.02 -0.02
TT- 1803	18.00	3.5	4.30	3.00	3.00	3.20	4.00	4.00	1.50	3.00	1.8	0.20	0.10	0.50	11.5	2.00	0.35

CONTROLLED COPY
TTPL

NOTES:-

MATERIAL	70/30 BRASS
FINISH	NATURAL
THICKNESS	0.35 ±0.02
HARDNESS IN VPN	130 - 160

TT-1803

TERMINAL PITCH 11.50^{+0.05}/_{-0.05}

PLATING THICKNESS:- 1.50 MICRON MIN. IN CASE OF PLATING

TERMINAL INSERTION FORCE INTO COUPLER:- 1.50KG. MAX.
TERMINAL WITHDRAWAL FORCE FROM COUPLER:- 6.00KG. MIN.

REV. NO.	AL. NO.	WAS	CHANGED TO	DATE	NAME	CHD. BY.
R01	190	NOT SHOWN	SHOWN W1(1.8-0.1/-0.05), L1(3.5+/-0.1)	27/11/06	VIB	VENU
GEN TOL.	CAT NO	TAB SIZE	CABLE SIZE	ALL DIMENSIONS ARE IN MM		
0-10 ±0.10	TT-1803	--	0.5-1.0 mm ²			
10-30 ±0.20	DRN BY VENU	CHECKED BY SANTOSH	APPROVED BY DATE SUJESH	FILENAME TT-1803	DATE 19-07-95.	SCALE 3:1
30-100 ±0.30	TT TERMINAL TECHNOLOGIES (I) PVT. LTD.			COMBINATION TERMINAL		SHEET 1 OF 1
100-300 ±0.50				DRAWING_NUMBER	D/TT/150.R01	