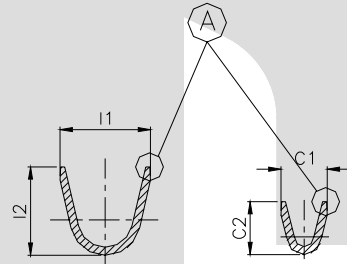
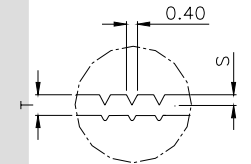
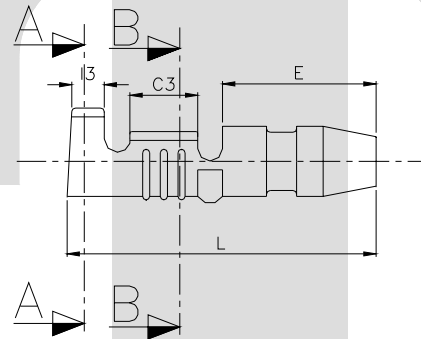


DETAIL B

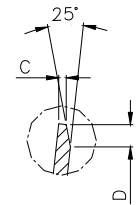


SECTION A-A

SECTION B-B



SECTION D-D



DETAIL A

TERMINAL TO TERMINAL (MALE WITH FEMALE) (TT-1808 BULLET WITH $\phi 3.96$ mm FEMALE)		
DESCRIPTION	AT 1ST INSERTION	AT 10TH WITHDRAWAL
PUSH LOAD MAX.	3.0 KG	
PULL LOAD MIN.		2.00 KG
MAX. MV. DROP AT 10A	10 MV.	
MAX. MV. DROP AT 10A		15 MV.

DIMENSION CLASSIFICATION	
SYMBOL	DESCRIPTION
▲	CRITICAL

CAT. NO.	L	E	C1	C2	C3	I1	I2	I3	$\phi D$	$\phi d$	$\phi d1$	C	S	D	P
TOLERANCE	+0.3 -0.3	+0.3 -0.3	+0.2 -0.2	+0.3 -0.3	+0.1 -0.1	+0.3 -0.3	+0.3 -0.3	+0.1 -0.1	+0.05 -0.05	+0.10 -0.10	+0.10 -0.10	+0.1 -0.1	+0.04 -0.04	+0.3 -0.3	+0.05 -0.05
TT- 1808	17.8	9.00	3.50	3.50	3.50	5.00	5.00	2.50	3.96	3.00	3.60	0.30	0.10	0.60	20.0

CONTROLLED COPY  
TTPL

NOTES:-

MATERIAL	63/37 BRASS
FINISH	NATURAL
THICKNESS	0.50 <sup>+0.02</sup>
HARDNESS IN VPN	115 - 135

TT-1808

TERMINAL PITCH 20.00<sup>+0.05</sup><sub>-0.05</sub>

PLATING THICKNESS:- 1.50 MICRON MIN. IN CASE OF PLATING

01	RM GRADE	BRASS 70/30	BRASS 63/37	10/01/06	AM	VENU	183 D
REV. NO.	AL. NO.	WAS	CHANGED TO	DATE	NAME	CHD. BY.	ECN NO.
GEN TOL	CAT NO	TAB SIZE	CABLE SIZE		ALL DIMENSIONS ARE IN MM		
0-10	TT-1808	$\phi 3.96$	0.75 - 2.0 mm <sup>2</sup>				
10-30	DRN BY VENU	CHECKED BY SANTOSH	APPROVED BY DATE SUJESH	FILENAME TT-1808	DATE 05-04-96	SCALE 3:1	
30-100	<b>TT</b>		<b>BULLET MALE</b>				
100-300	TERMINAL TECHNOLOGIES (I) PVT. LTD.		DRAWING_NUMBER	D/TT/120.R01	SHEET 1 OF 1		