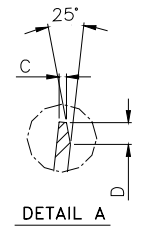
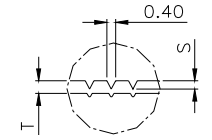
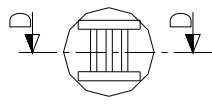
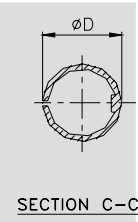
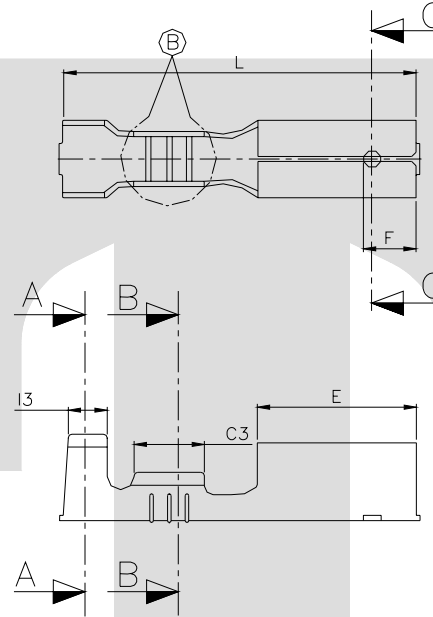
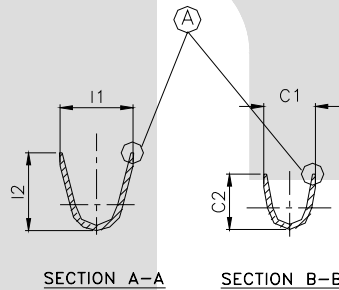


TERMINAL TO TERMINAL (MALE WITH FEMALE) (TT-1809 WITH $\phi 3.96$ mm MALE)		
DESCRIPTION	AT 1ST INSERTION	AT 10TH WITHDRAWAL
PUSH LOAD MAX.	4.50 KG	
PULL LOAD MIN.		2.00 KG
MAX. MV. DROP AT 10A	10 MV.	
MAX. MV. DROP AT 10A		15 MV.

DIMENSION SYMBOL	CLASSIFICATION DESCRIPTION
▲	CRITICAL



**CONTROLLED COPY  
TTPL**

CAT. NO.	L	E	C1	C2	C3	I1	I2	I3	$\phi D$	F	C	S	D	P	B	T
TOLERANCE	+0.3 -0.3	+0.2 -0.2	+0.2 -0.2	+0.2 -0.2	+0.1 -0.1	+0.3 -0.3	+0.3 -0.3	+0.1 -0.1	+0.1 -0.1	+0.2 -0.2	+0.05 -0.05	+0.04 -0.04	+0.03 -0.03	+0.05 -0.05	+0.00 -0.10	+0.02 -0.02
TT- 1809	20.0	8.80	3.00	3.00	4.00	4.80	5.00	2.50	4.50	3.10	0.25	0.11	0.50	22.0	2.00	0.35

**NOTES:-**

MATERIAL	70/30 BRASS
THICKNESS	0.35 $\pm 0.02$
HARDNESS IN VPN	130 - 160

TT-1809

TERMINAL PITCH 22.00  $\begin{matrix} +0.05 \\ -0.05 \end{matrix}$

PLATING THICKNESS:- 1.50 MICRON MIN. IN CASE OF PLATING  
 TERMINAL INSERTION FORCE INTO COUPLER:- 1.50KG. MAX  
 TERMINAL WITHDRAWAL FORCE FROM COUPLER:- 6.00 KG. MIN.

--	--	--	--	--	--	--	--	--	--	--	--	--	--	--	--	--

REV. NO.	AL. NO.	WAS	CHANGED TO	DATE	NAME	CHD. BY.
GEN. TOL.	CAT. NO.	TAB SIZE	CABLE SIZE	ALL DIMENSIONS ARE IN MM		
0-10 $\pm 0.10$	TT-1809	$\phi 3.96$	1.0-2.0 mm <sup>2</sup>			
10-30 $\pm 0.20$	DRN BY VENU	CHECKED BY SANTOSH	APPROVED BY DATE SUJESH	FILENAME TT-1809	DATE 19-04-96.	SCALE 3:1
30-100 $\pm 0.30$	<b>TT</b>		<b>BULLET FEMALE</b>			
100-300 $\pm 0.50$	TERMINAL TECHNOLOGIES (I) PVT. LTD.		DRAWING_NUMBER	D/TT/112.R0	SHEET 1 OF 1	