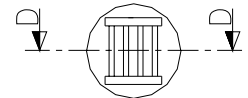
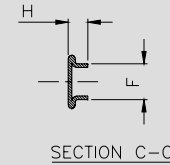
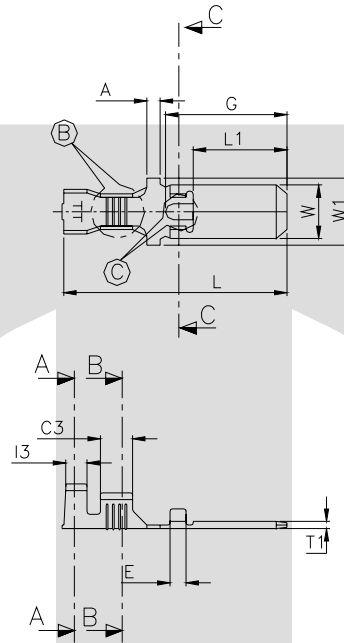
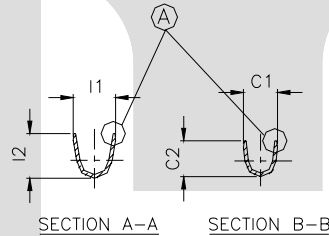


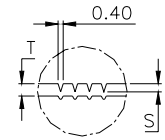
TERMINAL TO TERMINAL (MALE WITH FEMALE)
(TT-1810K WITH 6.3 X 0.80 FEMALE)

DESCRIPTION	AT 1ST INSERTION	AT 10TH WITHDRAWAL
PUSH LOAD MAX.	2.00 KG.	
PULL LOAD MIN.		0.80 KG.
MAX. MV. DROP AT 10A	10 MV.	
MAX. MV. DROP AT 10A		15 MV.

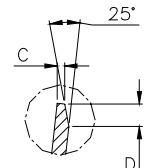
DIMENSION CLASSIFICATION	
SYMBOL	DESCRIPTION
▲	CRITICAL



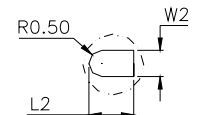
DETAIL B



SECTION D-D



DETAIL A



DETAIL C

CAT NO.	H	F	W	L	L1	W1	G	A	T1	E	CI	C2	I1	I2	C3	I3	C	S	D	W2	L2	P	B	T
TOLERANCE	+0.3 -0.2	+0.15 -0.15	+0.15 -0.1	+0.4 -0.3	+0.4 -0.3	+0.1 -0.1	+0.3 -0.3	+0.2 -0.1	+0.4 -0.4	+0.3 -0.1	+0.2 -0.2	+0.3 -0.3	+0.2 -0.2	+0.3 -0.3	+0.1 -0.1	+0.1 -0.1	+0.1 -0.1	+0.4 -0.4	+0.3 -0.3	+0.2 -0.1	+0.15 -0.15	+0.05 -0.05	+0.0 -0.15	+0.02 -0.02
TT-1810K	1.80	4.00	6.00	25.0	10.2	7.50	14.0	1.50	0.80	1.80	3.80	3.50	5.00	4.50	4.00	2.15	0.20	0.10	0.60	2.00	3.50	26.6	1.60	0.38

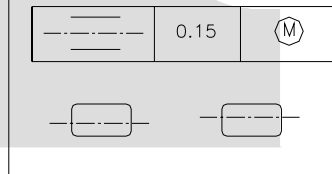
CONTROLLED COPY
TTPL

NOTES:-

MATERIAL	70/30 BRASS
FINISH	NATURAL
THICKNESS	0.38 ^{+0.02}
HARDNESS IN VPN	115 - 135

TT-1810K

LOCKING SLOT OFFSET



TERMINAL PITCH $26.60^{+0.05}_{-0.05}$

PLATING THICKNESS:- 1.50 MICRON MIN. IN CASE OF PLATING
TERMINAL INSERTION FORCE INTO COUPLER:- 1.50KG.MAX.
TERMINAL WITHDRAWL FORCE INTO COUPLER:- 6.00.KG.MIN.

01	No. of Serrations	3	4	19/02/05	AM	VENU	1.30
REV.NO.	AL. NO.	WAS	CHANGED TO	DATE	NAME	CHD.BY.	ECN NO.
GEN TOL.	CAT NO	TAB SIZE	CABLE SIZE	ALL DIMENSIONS ARE IN MM			
0-10 ±0.10	TT-1810 K	6.0 X 0.8	0.75 - 2.0 mm ²				
10-30 ±0.20	DRN BY.	CHECKED BY	APPROVED BY DATE	FILENAME	DATE	SCALE	
	VENU	SANTOSH	SUJESH	Tt-1810 K	19-04-97	15:1	
30-100 ±0.30	TT TERMINAL TECHNOLOGIES (I) PVT. LTD.			FOLDED MALE TAB			
100-300 ±0.50				DRAWING_NUMBER	D/TT/61.R01	SHEET	1 OF 1