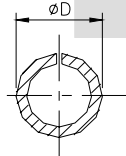


TERMINAL TO TERMINAL (MALE & FEMALE)
(6.30 X 0.80 MALE & TT-1812)

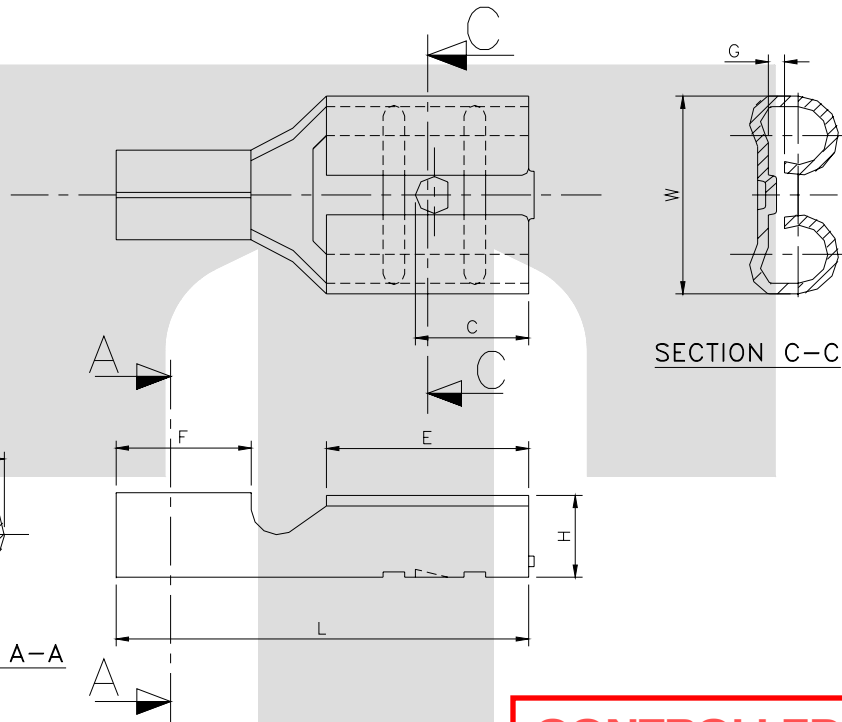
DESCRIPTION	AT 1ST INSERTION	AT 10TH WITHDRAWAL
PUSH LOAD MAX.	4.0 KG	
PULL LOAD MIN.		2.0 KG
MAX. MV. DROP AT 10A	10 MV	
MAX. MV. DROP AT 10A		15 MV

DIMENSION CLASSIFICATION	
SYMBOL	DESCRIPTION
▲	CRITICAL

CAT. NO.	L	E	H	W	G	F	∅D	C	P	B
TOLERANCE	+0.3 -0.3	+0.1 -0.1	+0.1 -0.1	+0.1 -0.1	+0.05 -0.05	+0.1 -0.1	+0.1 -0.1	+0.1 -0.2	+0.05 -0.05	+0.0 -0.15
TT- 1812	15.5	7.25	3.20	7.50	0.65	5.10	3.20	4.50	17.7	2.20



SECTION A-A



SECTION C-C

**CONTROLLED COPY
TTPL**

NOTES:-

MATERIAL	70/30 BRASS
FINISH	NATURAL
THICKNESS	0.40 ^{+0.02}
HARDNESS IN VPN	130 - 160

TT-1812

TERMINAL PITCH 17.70^{+0.05}_{-0.05}

PLATING THICKNESS:- 1.50 MICRON MIN. IN CASE OF PLATING

REV. NO.	AL. NO.	WAS	CHANGED TO	DATE	NAME	CHD. BY.
GEN. TOL.	CAT. NO.	TAB SIZE	CABLE SIZE	ALL DIMENSIONS ARE IN MM		
0-10 ±0.10	TT-1812	6.30 X 0.80	0.50-1.0 mm ²			
10-30 ±0.20	DRN BY VENU	CHECKED BY SANTOSH	APPROVED_BY_DATE SUJESH	FILENAME Tt-1812	DATE 22-08-96.	SCALE 3:1
30-100 ±0.30	 TERMINAL TECHNOLOGIES (I) PVT. LTD.		SINGLE BARREL TERMINAL			
100-300 ±0.50			DRAWING_NUMBER	D/TT/49RO	SHEET 1 OF 1	