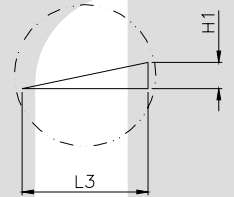
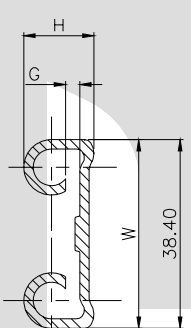


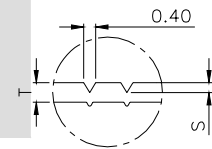
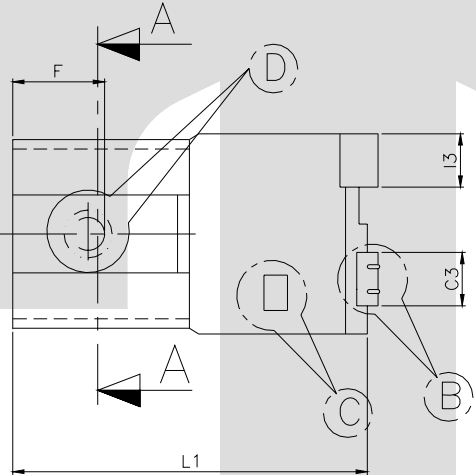
DETAIL B



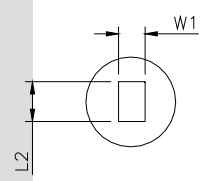
DETAIL D



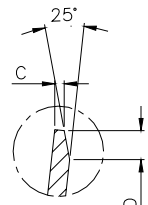
SECTION A-A



SECTION D-D



DETAIL C



DETAIL A

TERMINAL TO TERMINAL (MALE & FEMALE)
(4.80 X 0.80 MALE & TT-1815)

DESCRIPTION	AT 1ST INSERTION	AT 10TH WITHDRAWAL
PUSH LOAD MAX.	5.0 KG	
PULL LOAD MIN.		2.0 KG
MAX. MV. DROP AT 6.0A	10 MV.	
MAX. MV. DROP AT 6.0A		15 MV.

DIMENSION CLASSIFICATION	
SYMBOL	DESCRIPTION
▲	CRITICAL

CAT. NO.	L	L1	E	C2	C3	I2	I3	F	H	W	G	C	S	D	L2	L3	W1	H1	P	T
TOLERANCE	+0.1 -0.1	+0.3 -0.3	+0.1 -0.1	+0.3 -0.3	+0.1 -0.1	+0.3 -0.3	+0.1 -0.1	+0.2 -0.1	+0.1 -0.1	+0.1 -0.1	+0.05 -0.05	+0.1 -0.1	+0.04 -0.04	+0.3 -0.3	+0.2 -0.0	+0.1 -0.1	+0.2 -0.2	+0.05 -0.05	+0.05 -0.05	+0.02 -0.02
TT- 1815	9.50	11.5	6.50	6.50	1.60	7.30	1.60	3.20	2.50	6.00	0.65	0.25	0.10	0.50	1.80	1.20	1.20	0.15	16.0	0.40

NOTES:-

MATERIAL	70/30 BRASS
FINISH	NATURAL
THICKNESS	0.40 ^{+0.02}
HARDNESS IN VPN	130 - 160

TT-1815

CONTROLLED COPY
TTPL

TERMINAL PITCH 16.0^{+0.05}/_{-0.05}

PLATING THICKNESS:- 1.50 MICRON MIN. IN CASE OF PLATING
TERMINAL INSERTION FORCE INTO COUPLER:- 0.0KG.MAX.
TERMINAL WITHDRAWL FORCE INTO COUPLER:- 0.0.KG.MIN.

01	L2	SHOWN	DELETED	11-09-04	AM	BN	110
REV.NO.	AL. NO.	WAS	CHANGED TO	DATE	NAME	CHD.BY.	ECN NO.

GEN TOL	CAT. NO.	TAB SIZE	CABLE SIZE	ALL DIMENSIONS ARE IN MM			
0-10 ±0.10	TT-1815	4.80 X 0.80	1.0mm ²				
10-30 ±0.20	DRN BY VENU	CHECKED BY SANTOSH	APPROVED BY DATE SUJESH	FILENAME Tf-1815	DATE 19-12-99.	SCALE 3:1	
30-100 ±0.30	TT TERMINAL TECHNOLOGIES (I) PVT. LTD.			SIDE FLAG (OPEN) BARREL TERMINAL			
100-300 ±0.50				DRAWING_NUMBER	D/TT/21R01	SHEET 1 OF 1	