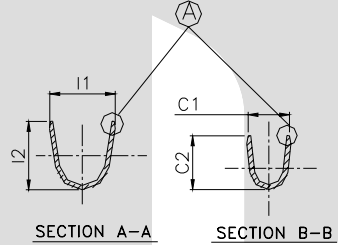
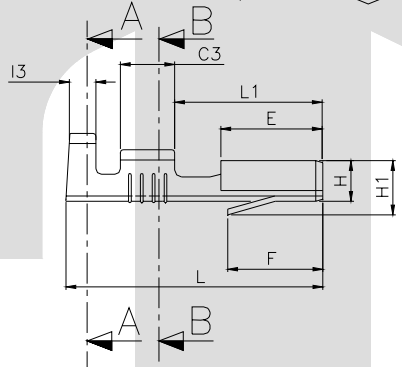


TERMINAL TO TERMINAL (FEMALE WITH MALE) (TT-1818 WITH 6.00 X 0.60 MALE)		
DESCRIPTION	AT 1ST INSERTION	AT 10TH WITHDRAWAL
PUSH LOAD MAX.	2.5 KG.	
PULL LOAD MIN.		1.0 KG.
MAX. MV. DROP AT 10A	10 MV.	
MAX. MV. DROP AT 10A		15 MV.



DIMENSION CLASSIFICATION	
SYMBOL	DESCRIPTION
▲	CRITICAL



CAT NO.	L	L1	E	W	H	H1	F	G	G1	C1	C2	C3	I1	I2	I3	D1	C	S	D	L2	W1	W2	P	B
TOLERANCE	+0.3 -0.3	+0.2 -0.2	+0.2 -0.2	+0.15 -0.15	+0.1 -0.1	+0.2 -0.2	+0.0 -0.3	+0.05 -0.05	+0.2 -0.1	+0.2 -0.2	+0.3 -0.3	+0.1 -0.1	+0.2 -0.2	+0.3 -0.3	+0.1 -0.1	+0.1 -0.3	+0.05 -0.05	+0.04 -0.04	+0.3 -0.3	+0.3 -0.3	+0.1 -0.1	+0.1 -0.1	+0.05 -0.05	+0.00 -0.15
TT-1818	18.7	10.9	7.50	7.50	2.95	4.30	7.50	0.40	0.80	3.00	3.50	4.10	5.00	5.00	2.30	0.50	0.15	0.10	0.60	4.80	1.80	1.90	21.0	2.30

NOTES:-

MATERIAL	70/30 BRASS
FINISH	NATURAL
THICKNESS	0.40 ^{+0.02}
HARDNESS IN VPV	130 - 160

CONTROLLED COPY
TTPL

TT-1818

TERMINAL PITCH 21.00^{+0.05}/_{-0.05}
 PLATING THICKNESS:- 1.50 MICRON MIN. IN CASE OF PLATING
 TERMINAL INSERTION FORCE INTO COUPLER:- 2.00KG.MAX.
 TERMINAL WITHDRAWL FORCE INTO COUPLER:- 6.00.KG.MIN.

02	No. of Serrations	3	4	08/03/05	AM	VENU	137-A	
01	THICKNESS	0.32	0.40	1-11-03	BN	BN	43	
REV.NO.	AL. NO.	WAS		CHANGED TO	DATE	NAME	CHD.BY.	ECN NO.
GEN TOL.	CAT NO	TAB SIZE	CABLE SIZE	ALL DIMENSIONS ARE IN MM				
0-10 ±0.10	TT-1818	0.60 THICK	0.5 - 1.50 mm ²					
10-30 ±0.20	DRN BY VENU	CHECKED BY SANTOSH	APPROVED_BY_DATE SUJESH	FILENAME Tt-1818	DATE 19-08-2003	SCALE 2:1		
30-100 ±0.30	TT			SNAP ON FEMALE TERMINAL				
100-300 ±0.50	TERMINAL TECHNOLOGIES (I) PVT. LTD.			DRAWING_NUMBER	D/TT/198,R02	SHEET 1 OF 1		