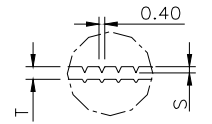
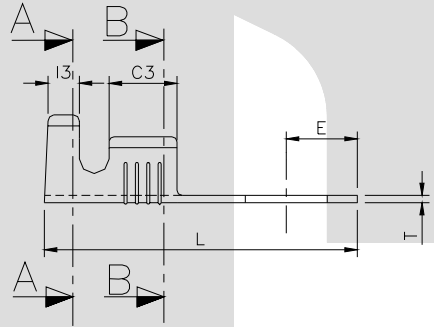
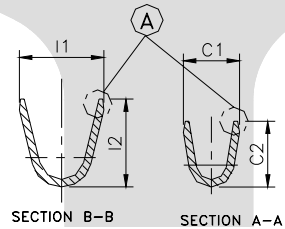


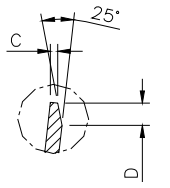
DETAIL B

DESCRIPTION	AT 1ST INSERTION	AT 10TH WITHDRAWAL
PUSH LOAD MAX.	N A	
PULL LOAD MIN.		N A
MAX. MV. DROP AT 4A	N A	
MAX. MV. DROP AT 4B		N A

DIMENSION SYMBOL	CLASSIFICATION DESCRIPTION
▲	CRITICAL



SECTION D-D



DETAIL A

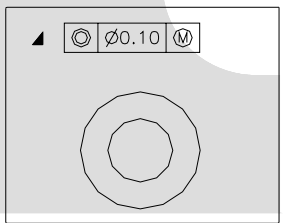
CAT NO.	L	E	T	ØD1	ØD2	C1	C2	C3	I1	I2	I3	C	S	D	P	B
TOLERANCE	+0.2 -0.2	+0.2 -0.2	+0.02 -0.02	+0.2 -0.0	+0.1 -0.1	+0.2 -0.2	+0.3 -0.3	+0.1 -0.1	+0.2 -0.2	+0.3 -0.3	+0.1 -0.1	+0.1 -0.2	+0.04 -0.04	+0.3 -0.3	+0.05 -0.05	+0.00 -0.10
TT-1822	21.5	4.75	0.50	5.40	9.50	3.50	4.00	4.70	5.00	4.60	2.35	0.30	0.10	0.60	23.5	2.00

CONTROLLED COPY  
TTPL

NOTES:-

MATERIAL	BRASS
FINISH	NATURAL
THICKNESS	0.50 ± 0.02
HARDNESS IN VPIN	115 - 135

TT-1822



TERMINAL PITCH  $23.5^{+0.05}_{-0.05}$

PLATING THICKNESS :- 1.50 MICRON MIN. IN CASE OF PLATING.  
TERMINAL INSERTION FORCE INTO COUPLER:- NA  
TERMINAL WITHDRAWAL FORCE INTO COUPLER:- NA

05	C2, I2	NOT CRITICAL	CRITICAL	18/01/06	AM	VENU	184
04	Tol. ØD2	±0.5	±0.1	02/03/05	AM	VENU	133
04	No.of Serration	3	4	02/03/05	AM	VENU	133
03	P ,B	---	New Dimension Added.	07/02/05	AM	PSB	120
02	S	$\pm 0.1$ 0.20	$\pm 0.04$ 0.10	10-4-04	VENU	BN	60
02	E, C3, C ,D	$\pm 0.1$ 4.75, 4.8, 0.40, 0.05, 0.5	$\pm 0.2$ 4.75, 4.70, 0.30, 0.6	10-4-04	VENU	BN	60
01	C ,S	NOT SHOWN	0.40, 0.20	8-7-03	VENU	BN	21 A
REV.NO.	AL. NO.	WAS	CHANGED TO	DATE	NAME	CHD.BY.	ECN NO.

GEN TOL.	CAT NO	TAB SIZE	CABLE SIZE	ALL DIMENSIONS ARE IN MM			
0-10 ±0.10	TT-1822	N A	0.75 - 1.50 mm <sup>2</sup>				
10-30 ±0.20	DRN BY VENU	CHECKED BY SANTOSH	APPROVED_BY_DATE SUJESH	FILENAME TT-1822	DATE 19-04-98	SCALE 3:1	
30-100 ±0.30	<b>TT</b> TERMINAL TECHNOLOGIES (I) PVT. LTD.			RING TERMINAL			
100-300 ±0.50				DRAWING_NUMBER	D/TT/82.R05	SHEET 1 OF 1	