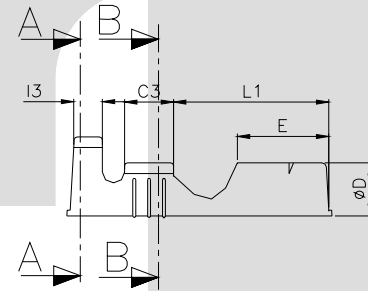
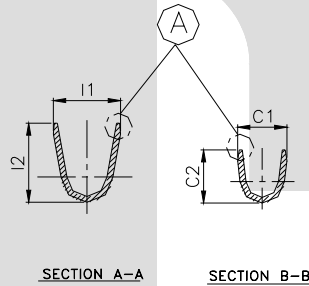


TERMINAL TO TERMINAL (MALE WITH FEMALE) (OD Ø3.96mm BULLET WITH TT-1825)			
DESCRIPTION	AT 1ST INSERTION	AT 10TH WITHDRAWAL	
PUSH LOAD MAX.	3.0 KG		▲
PULL LOAD MIN.		2.00 KG	▲
MAX. MV. DROP	10 MV.		
MAX. MV. DROP		15 MV.	

DIMENSION CLASSIFICATION	
SYMBOL	DESCRIPTION
▲	CRITICAL



CONTROLLED COPY
TTPL

CAT. NO.	L	E	C1	C2	I1	I2	C3	I3	H	G	L1	ØD	F	d	S	C	D	P	B	T
TOLERANCE	+0.3 -0.3	+0.15 -0.15	+0.2 -0.2	+0.3 -0.3	+0.2 -0.2	+0.3 -0.3	+0.1 -0.1	+0.1 -0.1	+0.1 -0.05	+0.3 -0.2	+0.3 -0.3	+0.1 -0.1	+0.2 -0.2	+0.1 -0.1	+0.4 -0.4	+0.1 -0.1	+0.3 -0.3	+0.05 -0.05	+0.00 -0.10	+0.02 -0.02
TT- 1825	17.5	6.5	3.50	3.50	5.00	5.20	3.2	2.2	0.15	0.80	10.0	4.60	3.20	3.70	0.10	0.25	0.50	20.0	2.50	0.40

NOTES:-

MATERIAL	70/30 BRASS
FINISH	NATURAL
THICKNESS	0.40 ^{+0.02}
HARDNESS IN VHN	130 - 160

TT-1825

TERMINAL PITCH 20.0^{+0.05}_{-0.05}

GO :- Ø3.60 MM PIN GAUGE, ▲
NO GO :- Ø3.80 MM PIN GAUGE ▲

PLATING THICKNESS:- 1.50 MICRON MIN. IN CASE OF PLATING
OVALITY ALLOWED WITHIN TOLERANCE OF ±0.1 mm

05	1st Insertion Force	5.0 Kgf.	3.0 kgf.	18/10/05	AM	VENU	178			
04	TOL.-C, C1, I1	+0.2 -0.2	+0.3 -0.3	+0.3 -0.3	+0.1 -0.1	+0.2 -0.2	22-7-03	VENU	BN	27
04	C, S	NOT SHOWN			0.20, 0.10		22-7-03	VENU	BN	27
03	H & I2	0.15 ^{+0.1} _{-0.1}	5.50 ^{+0.1} _{-0.1}		0.15 ^{+0.1} _{-0.05}	5.20 ^{+0.1} _{-0.1}	7-5-03	BN	BN	13
02	TOL.-L&E	10.0 ^{+0.1} _{-0.1}	8.0 ^{+0.1} _{-0.1}		17.5 ^{+0.2} _{-0.1}	6.5 ^{+0.1} _{-0.3}	27-9-02	VENU	VENU	--
01	G	G 0.60 ^{+0.1} _{-0.1}			G 0.80 MIN.		16-5-02	VENU	VENU	--
REV.NO.	AL. NO.	HAS			CHANGED TO		DATE	NAME	CHD.BY.	CHD.BY.
GEN TOL.	CAT.NO.	TAB SIZE		CABLE SIZE		ALL DIMENSIONS ARE IN MM				
0-10	TT-1825	Ø3.96		0.75 - 2.0 mm ²						
10-30	DRN BY VENU	CHECKED BY SANTOSH	APPROVED_BY_DATE SUJESH		FILENAME TT-1825	DATE 30-04-97.	SCALE 3-1			
30-100	TT TERMINAL TECHNOLOGIES (I) PVT. LTD.			BULLET FEMALE						
100-300				DRAWING_NUMBER		D/TT/113 R05		SHEET 1 OF 1		