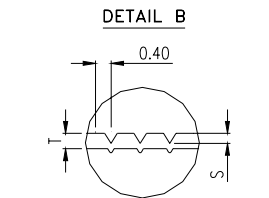
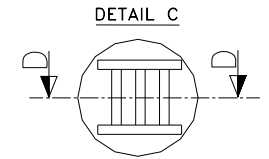
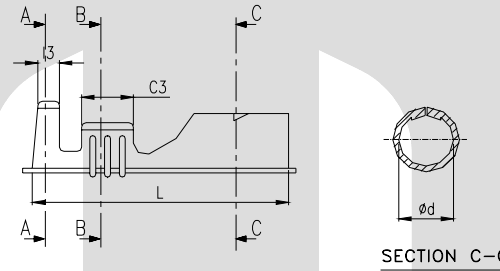
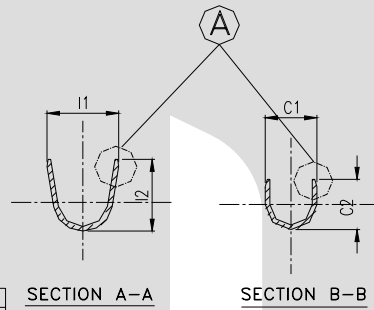


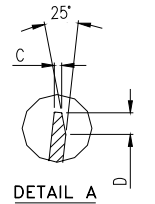
TERMINAL TO TERMINAL (MALE & FEMALE)
(OD ø3.50 bullet & TT-1854)

DESCRIPTION	AT 1ST INSERTION	AT 10TH WITHDRAWAL
PUSH LOAD MAX.	3.50 KG.	
PULL LOAD MIN.	IST PULL OUT FORCE: 3.5-6.0KG	2.00 KG.
MAX. MV. DROP AT 10A	10 MV.	
MAX. MV. DROP AT 10A		15 MV.

DIMENSION CLASSIFICATION	
SYMBOL	DESCRIPTION
▲	CRITICAL



SECTION D-D



DETAIL A

CAT. NO.	L	E	C1	C2	C3	I1	I2	I3	F	ød	T	S	C	D	L1	H	W	P	B
TOLERANCE	+0.2 -0.2	+0.2 -0.2	+0.2 -0.2	+0.3 -0.3	+0.1 -0.1	+0.2 -0.2	+0.3 -0.3	+0.1 -0.1	+0.2 -0.1	+0.05 -0.1	+0.02 -0.02	+0.02 -0.02	+0.05 -0.1	+0.3 -0.3	+0.3 -0.3	+0.1 -0.05	+0.3 -0.2	+0.05 -0.05	+0.00 -0.10
TT- 1854	17.5	6.50	3.50	3.50	3.50	5.00	5.00	1.80	3.20	3.40	0.32	0.09	0.20	0.60	1.20	0.15	1.50	19.0	1.50

CONTROLLED COPY
TTPL

TT-1854

NOTES:-

MATERIAL	70/30 BRASS
FINISH	NATURAL
THICKNESS	0.32 ^{+0.02}
HARDNESS IN VPN	130 - 160

TERMINAL PITCH 19.0^{+0.05}/_{-0.05}
 PLATING THICKNESS:- 1.50 MICRON MIN. IN CASE OF PLATING
 GO:- ø 3.30 mm PIN GAUGE ▲
 NO GO:- ø3.50 mm PIN GAUGE ▲

TAPER THROUGHOUT DIAMETER :- 0.1mm MAX. ▲
 OVALITY WITHIN 0.15mm MAX. ▲

REV.NO.	AL. NO.	WAS	CHANGED TO	DATE	NAME	CHD.BY.	ECN NO.
03	E (Location),D,S	+0.1 6.00 -0.2	+0.2 0.5 -0.2	+0.05 0.2 -0.1	+0.2 6.50 0.2	+0.3 0.6 -0.3	+0.02 0.09 -0.02
02	TOL.-CI, I1	+0.3 -0.3	+0.3 -0.3		+0.2 -0.2		
02	ød,S,C	NOT SHOWN		3,4,0,20,0,20			
01	LOAD	4.50 / 1.50		3.50 / 2.00			

GEN TOL	CAT.NO.	TAB SIZE	CABLE SIZE	ALL DIMENSIONS ARE IN MM			
0-10 ±0.10	TT-1854	ø3.50	0.75-2.0mm ²				
10-30 ±0.20	DRN BY VENU	CHECKED BY SANTOSH	APPROVED BY DATE SUJESH	FILENAME Tt-1854	DATE 01-04-99	SCALE 3:1	
30-100 ±0.30	TT			BULLET FEMALE			
100-300 ±0.50	TERMINAL TECHNOLOGIES (I) PVT. LTD.			DRAWING_NUMBER	D/TT/117.R03	SHEET 1 OF 1	