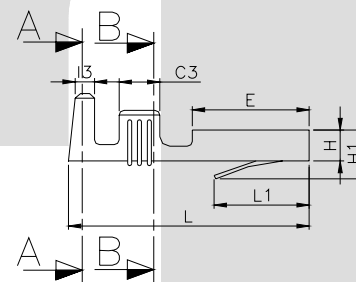
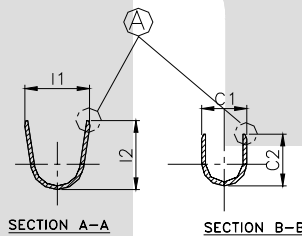
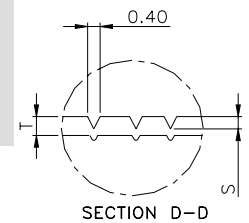


TERMINAL TO TERMINAL (MALE WITH FEMALE) (7.6 X 0.80 MALE WITH TT-1863)		
DESCRIPTION	AT 1ST INSERTION	AT 10TH WITHDRAWAL
PUSH LOAD MAX.	2.0 KG.	
PULL LOAD MIN.		1.0 KG.
MAX. MV. DROP AT 20A	10 MV	
MAX. MV. DROP AT 20A		15 MV

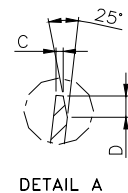
DIMENSION CLASSIFICATION	
SYMBOL	DESCRIPTION
▲	CRITICAL



DETAIL B



SECTION D-D



DETAIL A

**CONTROLLED COPY
TTPL**

CAT. NO.	L	L1	W	W1	H	H1	G	G1	E	C1	C2	C3	I1	I2	I3	C	S	D	P	B
TOLERANCE	+0.3 -0.3	+0.2 -0.2	+0.2 -0.1	+0.1 -0.1	+0.1 -0.1	+0.3 -0.2	+0.1 -0.2	+0.05 -0.05	+0.2 -0.2	+0.2 -0.2	+0.3 -0.3	+0.1 -0.1	+0.2 -0.2	+0.3 -0.3	+0.1 -0.1	+0.05 -0.05	+0.04 -0.04	+0.3 -0.3	+0.05 -0.05	+0.0 -0.15
TT- 1863	24.5	9.30	8.90	2.30	3.20	4.80	2.30	0.70	12.1	4.60	5.40	4.00	7.80	7.30	2.20	0.25	0.10	0.60	26.5	2.00

NOTES:-

MATERIAL	70/30 BRASS
FINISH	NATURAL
THICKNESS	0.40 ± 0.02
HARDNESS IN VPN	130 - 160

TT-1863

TERMINAL PITCH 26.50 ^{+0.05}/_{-0.05}

PLATING THICKNESS:- 1.50 MICRON MIN. IN CASE OF PLATING
 TERMINAL INSERTION FORCE INTO COUPLER:- 2.00KG.MAX.
 TERMINAL WITHDRAWL FORCE INTO COUPLER:- 6.00.KG.MIN.

01	L1	9.0	9.3 ^{+0.2} / _{-0.2}	14/06/04	BN	BN	89
REV.NO.	AL. NO.	WAS	CHANGED TO	DATE	NAME	CHD.BY.	ECN NO.
GEN TOL.	CAT NO	TAB SIZE	CABLE SIZE	ALL DIMENSIONS ARE IN MM			
0-10 ± 0.10	TT-1863	7.6 X 0.80	2.0 - 4.0 mm ²				
10-30 ± 0.20	DRN BY	CHECKED BY	APPROVED BY DATE	FILENAME	DATE	SCALE	
	VENU	SANTOSH	SUJESH	Tt-1863	01-03-2000	2:1	
30-100 ± 0.30	 TERMINAL TECHNOLOGIES (I) PVT. LTD.			SNAP ON FEMALE TERMINAL			
100-300 ± 0.50				DRAWING_NUMBER	D/TT/56 R01	SHEET	1 OF 1