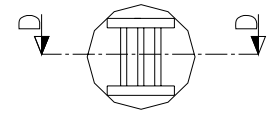
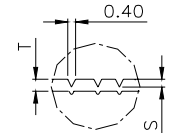


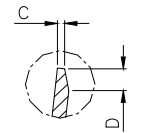
DETAIL C



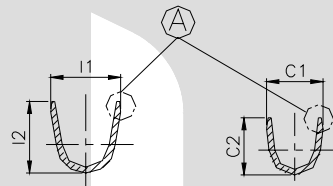
DETAIL B



SECTION D-D



DETAIL A



SECTION A-A

SECTION B-B

TERMINAL TO TERMINAL (MALE WITH FEMALE) (TT-1865 WITH 6.30 X 0.80 FEMALE)		
DESCRIPTION	AT 1ST INSERTION	AT 10TH WITHDRAWAL
PUSH LOAD MAX.	2.50 KG.	
PULL LOAD MIN.		0.80 KG.
MAX. MV. DROP AT 4A	10 MV.	
MAX. MV. DROP AT 4A		15 MV.

DIMENSION CLASSIFICATION	
SYMBOL	DESCRIPTION
▲	CRITICAL

CAT. NO.	L	L1	E	C1	C2	C3	I1	I2	I3	T	W	G	F	∅D	H	W1	C	S	D	P	B
TOLERANCE	+0.3 -0.3	+0.2 -0.2	+0.2 -0.2	+0.2 -0.2	+0.3 -0.3	+0.1 -0.1	+0.2 -0.2	+0.3 -0.3	+0.1 -0.1	+0.04 -0.04	+0.15 -0.1	+0.2 -0.2	+0.2 -0.2	+0.1 -0.1	+0.15 -0.2	+0.1 -0.1	+0.1 -0.1	+0.02 -0.02	+0.3 -0.3	+0.05 -0.05	+0.00 -0.15
TT- 1865	25.0	12.7	13.0	3.50	4.00	3.70	5.50	6.00	2.20	0.80	6.00	14.0	2.80	1.80	2.30	7.50	0.20	0.09	0.50	26.6	1.60

CONTROLLED COPY  
TTPL

NOTES:-

MATERIAL	70/30 BRASS
FINISH	NATURAL
THICKNESS	0.38 <sup>+0.02</sup>
HARDNESS IN VPN	115 - 135

TT-1865

TERMINAL PITCH 26.60<sup>+0.05</sup>/<sub>-0.05</sub>

PLATING THICKNESS:- 1.50 MICRON MIN. IN CASE OF PLATING  
 TERMINAL INSERTION FORCE INTO COUPLER:- 1.50KG.MAX.  
 TERMINAL WITHDRAWL FORCE INTO COUPLER:- 6.00.KG.MIN.

REV. NO.	AL. NO.	WAS	CHANGED TO	DATE	NAME	CHD. BY.
GEN TOL.	CAT NO	TAB SIZE	CABLE SIZE	ALL DIMENSIONS ARE IN MM		
0-10 ±0.10	TT-1865	6.0 X 0.80	2.0-3.0mm <sup>2</sup>			
10-30 ±0.20	DRN BY	CHECKED BY	APPROVED BY DATE	FILENAME	DATE	SCALE
	VENU	SANTOSH	SUJESH	Tt-1865	04-08-2000	3:1
30-100 ±0.30	<b>TT</b>			FOLDED MALE TAB WITH LANCING		
100-300 ±0.50	TERMINAL TECHNOLOGIES (I) PVT. LTD.			DRAWING_NUMBER	SHEET 1 OF 1	