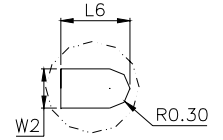
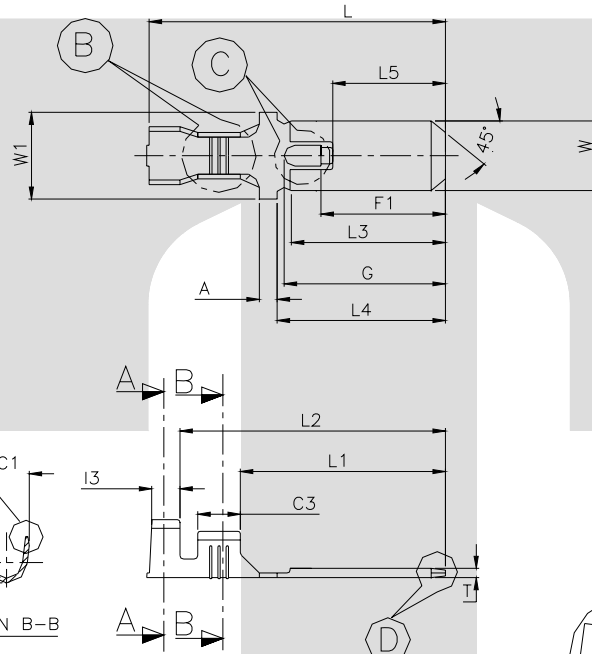
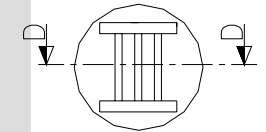


TERMINAL TO TERMINAL (MALE WITH FEMALE) (6 X 0.80 mm FEMALE WITH TT-1866)		
DESCRIPTION	AT 1ST INSERTION	AT 10TH WITHDRAWAL
PUSH LOAD MAX.	2.00 KG.	
PULL LOAD MIN.		0.80 KG.
MAX. MV. DROP AT 10A	10 MV.	
MAX. MV. DROP AT 10A		15 MV.

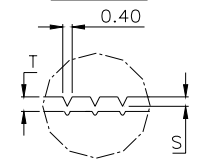
DIMENSION CLASSIFICATION	
SYMBOL	DESCRIPTION
▲	CRITICAL



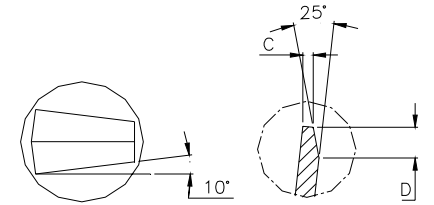
DETAIL C



DETAIL B

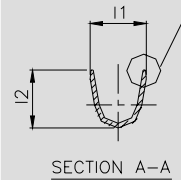


SECTION D-D

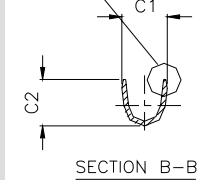


DETAIL D

DETAIL A



SECTION A-A



SECTION B-B

CAT. NO.	W	W1	L	L1	L2	L3	L4	L5	G	A	T	CI	C2	I1	I2	C3	I3	C	S	D	L6	W2	P	B	F1
TT-1866	6.00	7.50	24.8	17.4	22.5	13.0	14.0	9.40	13.8	1.10	0.80	3.80	5.10	5.70	6.00	3.75	2.15	0.20	0.10	0.60	3.40	1.80	26.6	1.90	10.30

NOTE:-

MATERIAL	70/30 BRASS
FINISH	NATURAL
THICKNESS	0.38 ^{+0.02}
HARDNESS IN VPIN	115 - 135

CONTROLLED COPY
TTPL

TT-1866

TERMINAL PITCH $26.60^{+0.05}_{-0.05}$
 PLATING THICKNESS:- 1.50 MICRON MIN. IN CASE OF PLATING
 TERMINAL INSERTION FORCE INTO COUPLER :- 1.50 KG. MAX.
 TERMINAL WITHDRAWL FORCE INTO COUPLER :- 6.00 KG. MIN.

04	B, L5	1.80+0/-0.15 , 10.20+/-0.3	1.90+/-0.1 , 9.40+/-0.2	08-04-06	AM	VENU	188
03	F1	NOT SHOWN	SHOWN	14-12-05	AM	VENU	181A
02	L6 , W2	3.20 ^{+0.15} _{-0.15} , 1.70 ^{+0.20} _{-0.20}	3.40 ^{+0.10} _{-0.10} , 1.80 ^{+0.00} _{-0.15}	21-05-05	AM	VENU	155
01	C1 , C2 , S	3.50 , 4.00 , 0.15 ^{+0.05} _{-0.05}	3.80 , 5.10 , 0.10 ^{+0.04} _{-0.04}	12-02-04	BN	VENU	51
REV. NO.	AL. NO.	WAS	CHANGED TO	DATE	NAME	CHD. BY.	ECN NO.

GEN TOL.	CAT NO.	TAB SIZE	CABLE SIZE	ALL DIMENSIONS ARE IN MM			
0-10 ± 0.10	TT-1866	6.0 X 0.80	1.0 - 2.5mm ²				
10-30 ± 0.20	DRN BY	CHECKED BY	APPROVED BY DATE	FILENAME	DATE	SCALE :	
	VENU	SANTOSH	SUJESH	Tt-1866	19-04-00	drg. not to scale	
30-100 ± 0.30	TT			FOLDED MALE TAB			
100-300 ± 0.50	TERMINAL TECHNOLOGIES (I) PVT. LTD.			DRAWING_NUMBER	D/TT/64.R03	SHEET	
						1 OF 1	