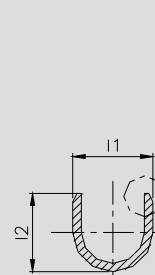


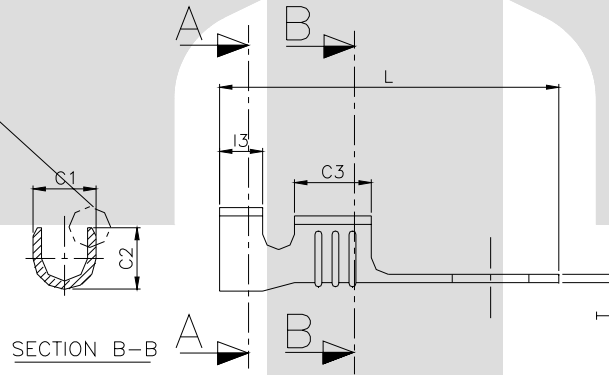
DETAIL B

DESCRIPTION	AT 1ST INSERTION	AT 10TH WITHDRAWAL
PUSH LOAD MAX.	N A	
PULL LOAD MIN.		N A
MAX. MV. DROP	N A	
MAX. MV. DROP		N A

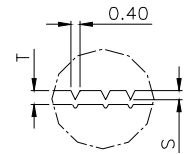
DIMENSION CLASSIFICATION	
SYMBOL	DESCRIPTION
▲	CRITICAL



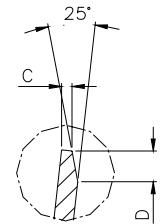
SECTION A-A



SECTION B-B



SECTION D-D



DETAIL A

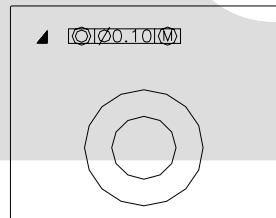
CAT NO.	L	T	øD	ød	C1	C2	C3	I1	I2	I3	S	C	D	P	B
TOLERANCE	+0.3 -0.3	+0.02 -0.02	+0.1 -0.1	+0.1 -0.1	+0.2 -0.2	+0.3 -0.3	+0.1 -0.1	+0.2 -0.2	+0.3 -0.3	+0.1 -0.1	+0.04 -0.04	+0.1 -0.2	+0.3 -0.3	+0.05 -0.05	+0.10 -0.10
TT-1871	20.0	0.50	8.00	5.20	3.80	3.50	4.30	5.00	4.50	2.80	0.10	0.30	0.60	22.0	2.10

CONTROLLED COPY
TTPL

NOTES:-

MATERIAL	BRASS
FINISH	NATURAL
THICKNESS	±0.02 0.50
HARDNESS IN VPN	115 - 135

TT-1871



TERMINAL PITCH 22.00^{+0.05}/_{-0.05}

PLATING THICKNESS:- 1.50 MICRON MIN. IN CASE OF PLATING
 TERMINAL INSERTION FORCE INTO COUPLER:- N.A.
 TERMINAL WITHDRAWAL FORCE FROM COUPLER:- N.A.

R01	B	B(2.0+0.0/-0.10)	B(2.10+/-0.10)	27/10/07	SAMPADA	KOMAL	199
REV. NO.	AL. NO.	WAS	CHANGED TO	DATE	NAME	CHD. BY.	ECN NO.
GEN. TOL.	CAT. NO.	CABLE SIZE		ALL DIMENSIONS ARE IN MM			
0-10 ±0.10	TT-1871	0.75-2.0 mm ²					
10-30 ±0.20	DRN BY	CHECKED BY	APPROVED BY DATE	FILENAME	DATE	SCALE	
	VENU	SANTOSH	SUJESH	Tt-1871	24-08-2000	3:1	
30-100 ±0.30	TT			RING TERMINAL			
100-300 ±0.50	TERMINAL TECHNOLOGIES (I) PVT. LTD.			DRAWING_NUMBER	D/TT/94.R01	SHEET 1 OF 1	