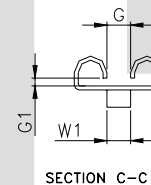
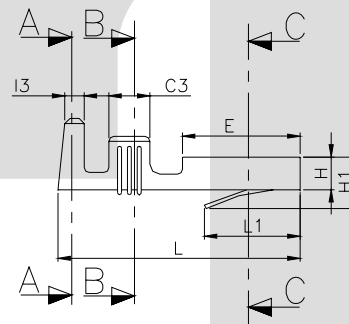
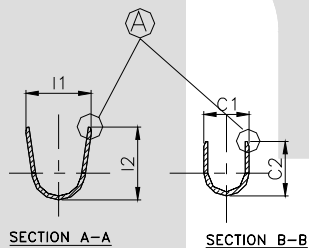


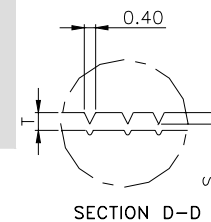
DETAIL B

TERMINAL TO TERMINAL (MALE WITH FEMALE) ( 7.6 X 0.80 MALE WITH TT-1884 )		
DESCRIPTION	AT 1ST INSERTION	AT 10TH WITHDRAWAL
PUSH LOAD MAX.	2.0 KG.	
PULL LOAD MIN.		1.0 KG.
MAX. MV. DROP AT 20A	10 MV	
MAX. MV. DROP AT 20A		15 MV

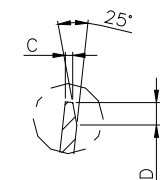
DIMENSION CLASSIFICATION	
SYMBOL	DESCRIPTION
▲	CRITICAL



SECTION C-C



SECTION D-D



DETAIL A

CAT. NO.	L	L1	W	W1	H	H1	G	G1	E	C1	C2	C3	I1	I2	I3	C	S	D	P	B
TOLERANCE	+0.3 -0.3	+0.2 -0.2	+0.2 -0.1	+0.1 -0.1	+0.1 -0.1	+0.3 -0.2	+0.1 -0.2	+0.05 -0.05	+0.2 -0.2	+0.2 -0.2	+0.3 -0.3	+0.1 -0.1	+0.2 -0.2	+0.3 -0.3	+0.1 -0.1	+0.05 -0.05	+0.04 -0.04	+0.3 -0.3	+0.05 -0.05	+0.00 -0.15
TT- 1884	24.5	9.30	8.90	2.30	3.20	4.80	2.30	0.70	12.1	3.30	3.60	4.10	5.50	5.20	2.40	0.25	0.10	0.50	26.5	2.00

**CONTROLLED COPY  
TTPL**

NOTES:-

MATERIAL	70/30 BRASS
FINISH	NATURAL
THICKNESS	0.40 ±0.02
HARDNESS IN VPN	130 - 160

TT-1884

TERMINAL PITCH 26.50 <sup>+0.05</sup>/<sub>-0.05</sub>

PLATING THICKNESS:- 1.50 MICRON MIN. IN CASE OF PLATING  
TERMINAL INSERTION FORCE INTO COUPLER:- 2.0KG.MAX.  
TERMINAL WITHDRAWL FORCE INTO COUPLER:- 6.00.KG.MIN.

02	C3 , I3	4.0 , 2.20	4.10 , 2.40	17/04/05	AM	C.A.A	147
01	L1 , E	9.20 , 12.0 <sup>+0.1</sup>	9.30 , 12.1 <sup>+0.2</sup>	3/07/04	AM	BN	98
REV.NO.	AL. NO.	WAS	CHANGED TO	DATE	NAME	CHD.BY.	ECN NO.
GEN.TOL.	CAT.NO.	TAB SIZE	CABLE SIZE	ALL DIMENSIONS ARE IN MM			
0-10	TT-1884	7.6 X 0.80	1.0 - 2.5 mm <sup>2</sup>				
10-30	DRN BY VENU	CHECKED BY SANTOSH	APPROVED BY DATE SUJESH	FILENAME TT-1884	DATE 01-03-2000	SCALE 2:1	
30-100	 <b>TERMINAL TECHNOLOGIES (I) PVT. LTD.</b>			8 MM TERMINAL ( SMALL BARREL )			
100-300				DRAWING_NUMBER	D/TT/57,R02	SHEET 1 OF 1	