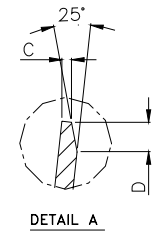
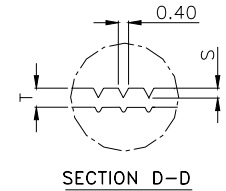
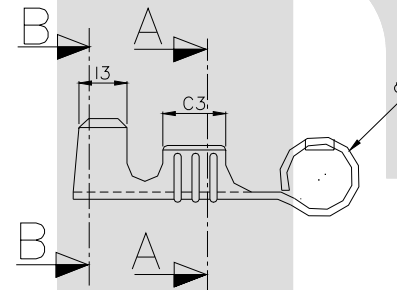
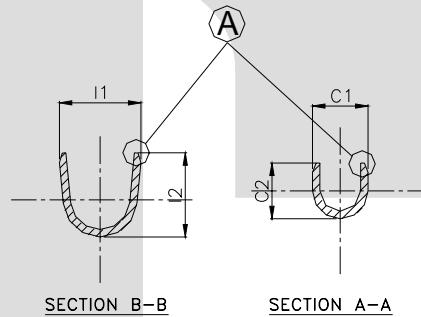


DESCRIPTION	AT 1ST INSERTION	AT 10TH WITHDRAWAL
PUSH LOAD MAX.	4.0 KG	
PULL LOAD MIN.		1.50 KG
MAX. MV. DROP AT 10A	10 MV	
MAX. MV. DROP AT 10A		15 MV

DIMENSION	CLASSIFICATION
SYMBOL	DESCRIPTION
▲	CRITICAL



CONTROLLED COPY
TTPL

CAT. NO.	L	E	F	ϕD	C1	C2	C3	I1	I2	I3	S	C	D	P	$\phi d1$	W	H
TOLERANCE	+0.3 -0.3	+0.2 -0.2	+0.3 -0.2	+0.1 -0.1	+0.2 -0.2	+0.3 -0.3	+0.1 -0.1	+0.2 -0.2	+0.3 -0.3	+0.1 -0.1	+0.02 -0.02	+0.1 -0.05	+0.3 -0.3	+0.05 -0.05	+0.1 -0.1	+0.1 -0.1	+0.2 -0.2
TT- 1917	16.5	10.1	3.30	4.50	2.90	3.00	3.30	4.00	3.80	2.40	0.09	0.20	0.60	14.0	1.50	3.00	20.5

NOTES:-

MATERIAL	70/30 BRASS
FINISH	NATURAL
THICKNESS	0.39 ± 0.02
HARDNESS IN VPN	130 - 160

TT-1917

TERMINAL PITCH 14.00 ± 0.05

GO :- $\phi 3.60$ MM PIN GAUGE,
NO GO :- $\phi 3.80$ MM PIN GAUGE

PLATING THICKNESS:- 1.50 MICRON MIN. IN CASE OF PLATING

REV. NO.	AL. NO.	M/S	CHANGED TO	DATE	NAME	CHD. BY.
GEN TOL	CAT. NO.	TAB SIZE	CABLE SIZE	ALL DIMENSIONS ARE IN MM		
0-10 ± 0.10	TT-1917	$\phi 3.96$	0.5-1.0mm ²			
10-30 ± 0.20	DRN BY VENU	CHECKED BY SANTOSH	APPROVED BY DATE SUJESH	FILENAME TT-1917	DATE 12-12-01	SCALE 3:1
30-100 ± 0.30	TT		SIDE FEED BULLET			
100-300 ± 0.50	TERMINAL TECHNOLOGIES (I) PVT. LTD.		DRAWING_NUMBER	D/TT/119,R0	SHEET 1 OF 1	