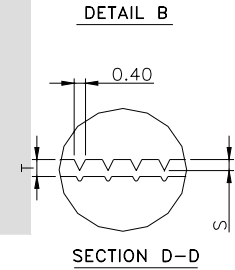
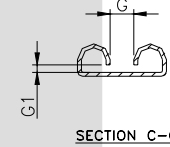
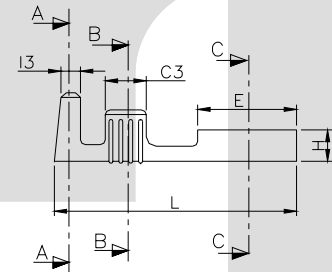
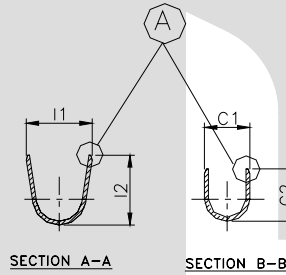


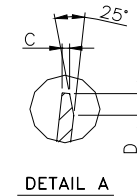
TERMINAL TO TERMINAL (MALE WITH FEMALE) (TT-1927 WITH 8.00 X 0.80mm FOLDED FEMALE)		
DESCRIPTION	AT 1ST INSERTION	AT 10TH WITHDRAWAL
PUSH LOAD MAX.	2.0 KG.	
PULL LOAD MIN.		0.8 KG.
MAX. MV. DROP AT 20A	10 MV.	
MAX. MV. DROP AT 20A		15 MV.



DIMENSION CLASSIFICATION	
SYMBOL	DESCRIPTION
▲	CRITICAL

CAT. NO.	L	W	H	G	G1	E	C1	C2	C3	I1	I2	I3	C	S	D	P	B	T
TOLERANCE	+0.3 -0.3	+0.1 -0.1	+0.1 -0.1	+0.1 -0.2	+0.05 -0.05	+0.1 -0.2	+0.2 -0.2	+0.3 -0.3	+0.1 -0.1	+0.2 -0.2	+0.3 -0.3	+0.1 -0.1	+0.1 -0.1	+0.04 -0.04	+0.3 -0.3	+0.05 -0.05	+0.00 -0.15	+0.02 -0.02
TT- 1927	24.5	8.90	3.20	2.30	0.70	9.70	4.80	5.40	4.00	8.00	7.30	2.20	0.25	0.10	0.50	26.5	2.00	0.40

CONTROLLED COPY
TTPL



NOTES:-

MATERIAL	70/30 BRASS
FINISH	NATURAL
THICKNESS	0.40 ^{+0.02}
HARDNESS IN VHN	130 - 160

TT-1927

TERMINAL PITCH $26.50^{+0.05}_{-0.05}$

PLATING THICKNESS:- 1.50 MICRON MIN. IN CASE OF PLATING
 TERMINAL INSERTION FORCE INTO COUPLER:- 2.50KG. MAX.
 TERMINAL WITHDRAWL FORCE FROM COUPLER:- 6.00KG. MIN.

02	C1, I1	4.60, 7.80	4.80, 8.00	17/09/05	AM	VENU	172
01	No. of Serration	3	4	26/06/05	AM	VENU	165
REV. NO.	AL. NO.	WAS	CHANGED TO	DATE	NAME	CHD. BY.	ECN No.
GEN TOL.	CAT. NO.	TAB SIZE	CABLE SIZE	ALL DIMENSIONS ARE IN MM			
0-10 ± 0.10	TT-1927	7.60 X 0.80	2.0 - 4.0 mm ²				
10-30 ± 0.20	DRN BY	CHECKED BY	APPROVED BY DATE	FILENAME	DATE	SCALE	
	VENU	SANTOSH	SUJESH	Tt-1927	16-02-02	2:1	
30-100 ± 0.30	TT			SNAP ON FEMALE TERMINAL			
100-300 ± 0.50	TERMINAL TECHNOLOGIES (I) PVT. LTD.			DRAWING_NUMBER	D/TT/06.R02	SHEET	1 OF 1