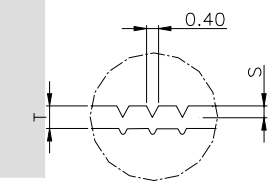
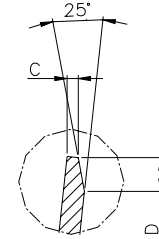


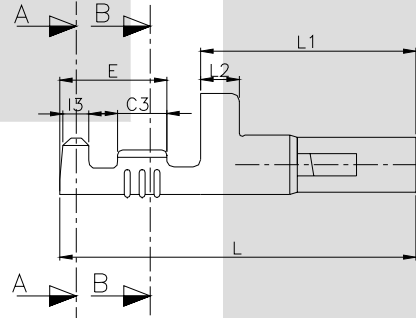
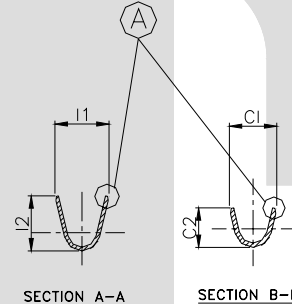
DETAIL B



SECTION D-D



DETAIL A



DESCRIPTION	AT 1ST INSERTION	AT 10TH WITHDRAWAL
PUSH LOAD MAX.	N A	
PULL LOAD MIN.		N A
MAX. MV. DROP	N A	
MAX. MV. DROP		N A

DIMENSION CLASSIFICATION	
SYMBOL	DESCRIPTION
▲	CRITICAL

CAT. NO.	L	L1	L2	L3	E	C1	C2	C3	I1	I2	I3	W	W1	phi D	phi d	C	S	D	phi d1	H	P	W2
TOLERANCE	+0.3 -0.3	+0.1 -0.1	+0.1 -0.1	+0.2 -0.1	+0.2 -0.2	+0.2 -0.2	+0.3 -0.3	+0.1 -0.1	+0.2 -0.2	+0.3 -0.3	+0.1 -0.1	+0.2 -0.2	+0.2 -0.2	+0.05 -0.1	+0.05 -0.05	+0.02 -0.02	+0.02 -0.02	+0.3 -0.3	+0.1 -0.1	+0.4 -0.2	+0.05 -0.05	+0.3 -0.3
TT- 1939	24.0	14.5	2.50	6.90	7.40	3.40	3.40	3.40	6.00	6.00	1.90	5.70	1.10	4.00	3.70	0.2	0.08	0.5	3.00	30.4	18.0	4.60

NOTES:-

MATERIAL	70/30 BRASS
FINISH	NATURAL
THICKNESS	0.30 ±0.02
HARDNESS IN VPN	130 - 160

**CONTROLLED COPY
TTPL**

TT-1939

TERMINAL PITCH 18.00 ^{+0.05}/_{-0.05}

PLATING THICKNESS:- 1.50 MICRON MIN.

INSERTION FORCE (TERMINAL TO COUPLER) :-2.0 KG MAX.

WITHDRAWL FORCE (TERMINAL TO COUPLER):- 6.0 KG MIN.

02	Tol. phi D	+0.0 / -0.1	+0.05 / -0.10	26/04/05	AM	VENU	153
01	W,L3,W1	6.20,7.10,1.0	5.7,6.90,1.10	13-03-03	BN	BN	10
REV.NO.	AL. NO.	WAS	CHANGED TO	DATE	NAME	CHD.BY.	ECN NO.
GEN TOL.	CAT NO	TAB SIZE	CABLE SIZE	ALL DIMENSIONS ARE IN MM			
0-10 ±0.10	TT-1939	phi 3.0	0.75 - 1.5 mm ²				
10-30 ±0.20	DRN BY VENU	CHECKED BY SANTOSH	APPROVED BY DATE SUJESH	FILENAME Tt-1939	DATE 21-07-01	SCALE 3:1	
30-100 ±0.30	 TERMINAL TECHNOLOGIES (I) PVT. LTD.			PIN CONNECTOR (FEMALE)			
100-300 ±0.50				DRAWING_NUMBER	D/TT/152.R02	SHEET 1 OF 1	