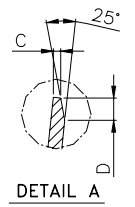
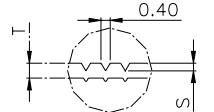
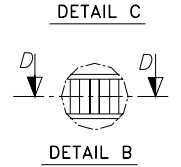
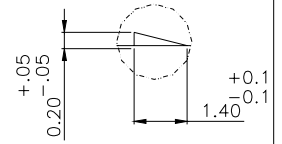
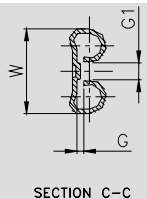
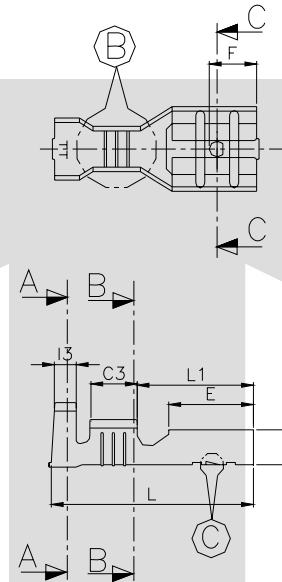
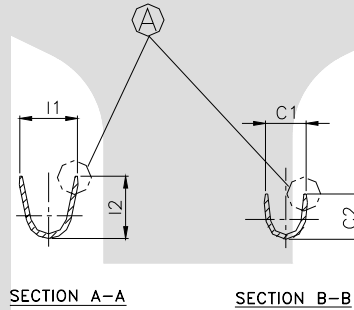


TERMINAL TO TERMINAL (FEMALE WITH MALE)
(TT-1961 WITH 6.30 X 0.80 MALE)

DESCRIPTION	AT 1ST INSERTION	AT 10TH WITHDRAWAL
PUSH LOAD MAX.	5.0 KG. ▲	
PULL LOAD MIN.		2.0 KG. ▲
MAX. MV. DROP AT 10A	10 MV.	
MAX. MV. DROP AT 10A		15 MV.

DIMENSION CLASSIFICATION	
SYMBOL	DESCRIPTION
▲	CRITICAL



**CONTROLLED COPY
TTPL**

CAT NO.	L	E	W	H	G	G1	F	L1	C3	I3	C1	C2	I1	I2	C	S	D	P	B	T
TOLERANCE	+0.3 -0.3	+0.2 -0.2	+0.15 -0.15	+0.1 -0.1	+0.05 -0.05	+0.2 -0.3	+0.15 -0.15	+0.2 -0.2	+0.1 -0.1	+0.1 -0.1	+0.2 -0.2	+0.3 -0.3	+0.2 -0.2	+0.3 -0.3	+0.1 -0.1	+0.04 -0.04	+0.3 -0.3	+0.05 -0.05	+0.0 -0.15	+0.2 -0.2
TT-1961	18.7	7.50	7.50	3.10	0.61	1.70	4.20	10.3	4.30	2.30	3.10	3.10	4.50	4.50	0.25	0.10	0.50	21.0	2.30	0.40

NOTES:-

MATERIAL	70/30 BRASS
FINISH	NATURAL
THICKNESS	0.40 ^{+0.02}
HARDNESS IN VPV	130 - 160

TT-1961

TERMINAL PITCH 21.00^{+0.05}/_{-0.05}

PLATING THICKNESS:- 1.50 MICRON MIN. IN CASE OF PLATING
TERMINAL INSERTION FORCE INTO COUPLER:- 2.50KG.MAX. ▲
TERMINAL WITHDRAWL FORCE INTO COUPLER:- 6.00.KG.MIN. ▲

02	C3,I3,D	4.40, 2.40, 0.4 ^{+0.2}	4.30, 2.30, 0.5 ^{+0.3} / _{-0.3}	10-4-04	AM	BN	57	
01	C, S	NOT SHOWN	0.25, 0.10	10-9-03	BN	BN	37 C	
01	TOL E, W, C1, I1	+0.1 +0.1 +0.3 +0.3 -0.1, -0.1, -0.3, -0.3,	+0.20 +0.15 +0.2 +0.2 -0.20 -0.15, -0.2, -0.2,	10-9-03	BN	BN	37 C	
REV.NO.	AL. NO.	WAS		CHANGED TO	DATE	NAME	CHD.BY.	CHD.BY.
GEN TOL	CAT.NO.	TAB SIZE	CABLE SIZE	ALL DIMENSIONS ARE IN MM				
0-10	TT-1961	6.30 X 0.80	0.50-1.25 mm ²					
10-30	DRN BY	CHECKED BY	APPROVED BY DATE	FILENAME	DATE	SCALE		
	VENU	SANTOSH	SUJESH	Tt-1961	19-04-99.	2:1		
30-100				SNAP ON FEMALE TERMINAL				
100-300				TERMINAL TECHNOLOGIES (I) PVT. LTD.	DRAWING_NUMBER	D/TT/12 R02	SHEET	1 OF 1