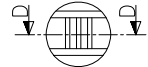
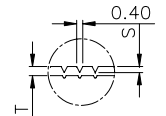


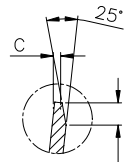
DETAIL C



DETAIL B

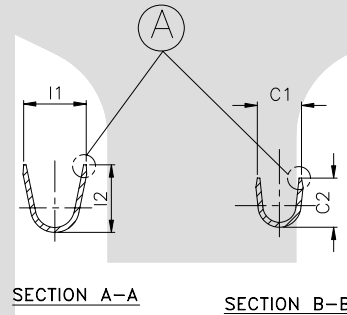


SECTION D-D



DETAIL A

TERMINAL TO TERMINAL (FEMALE WITH MALE) (TT-1964 WITH 4.80 X 0.50 MALE)		
DESCRIPTION	AT 1ST INSERTION	AT 10TH WITHDRAWAL
PUSH LOAD MAX.	4.50 KG.	
PULL LOAD MIN.		2.0 KG. ▲
MAX. MV. DROP AT 6A	10 MV.	
MAX. MV. DROP AT 6A		15 MV.



DIMENSION SYMBOL	CLASSIFICATION DESCRIPTION
▲	CRITICAL

CONTROLLED COPY
TTPL

CAT NO.	L	E	W	G	H	C1	C2	I1	I2	C3	I3	F	C	S	D	L1	H1	P	B	T
TOLERANCE	+0.3 -0.3	+0.15 -0.2	+0.1 -0.2	+0.0 -0.05	+0.15 -0.1	+0.2 -0.2	+0.3 -0.3	+0.2 -0.2	+0.3 -0.3	+0.1 -0.1	+0.1 -0.1	+0.15 -0.15	+0.05 -0.1	+0.02 -0.02	+0.3 -0.3	+0.05 -0.05	+0.05 -0.05	+0.05 -0.05	+0.0 -0.15	+0.02 -0.02
TT-1964	15.5	6.30	6.00	0.45	2.60	3.40	3.60	4.70	4.80	3.20	2.10	3.80	0.20	0.08	0.50	1.20	0.15	17.5	2.00	0.35

NOTES:-

MATERIAL	70/30 BRASS
FINISH	NATURAL
THICKNESS	0.35 ^{+0.02}
HARDNESS IN VPN	130 - 160

TT-1964

TERMINAL PITCH 17.50^{+0.05}/_{-0.05}

PLATING THICKNESS:- 1.50 MICRON MIN. IN CASE OF PLATING
TERMINAL INSERTION FORCE INTO COUPLER:- 2.50KG.MAX.
TERMINAL WITHDRAWL FORCE INTO COUPLER:- 6.00.KG.MIN.

02	I3	2.00	2.10	20/07/05	AM	VENU	168			
02	PULL LOAD min.	1.50 Kg.	2.0 Kg.	20/07/05	AM	VENU	168			
02	CABLE SIZE	0.75 - 1.55 mm ²	0.50 - 1.55 mm ²	20/07/05	AM	VENU	168			
01	D,S	NOT SHOWN	0.20 , 0.08	27-8-03	BN	SVN	35			
01	TOL. E ,W ,F	+0.10 -0.10	+0.10 -0.20	+0.15 -0.15	27-8-03	BN	SVN 35			
01	C1,I1,C2,I2,H	3.25,4.7,3.6,5,2.75	3.4,4.7,3.6,4.8,2.6	+0.2 -0.2	+0.2 -0.2	+0.3 -0.3	+0.15 -0.1	27-8-03	BN	SVN 35
01	CAT.NO.	TT-1965	TT-1964	27-8-03	BN	SVN	35			
REV.NO.	AL. NO.	WAS	CHANGED TO	DATE	NAME	CHD.BY.	ECN NO.			
GEN.TOL.	CAT.NO.	TAB SIZE	CABLE SIZE	ALL DIMENSIONS ARE IN MM						
0-10	±0.10	TT-1964	4.8 X 0.50	0.50 - 1.5 mm ²						
10-30	±0.20	DRN. BY	CHECKED BY	APPROVED_BY_DATE	FILENAME	DATE	SCALE			
		VENU	SANTOSH	SUJESH	Tt-1964	19-01-92	2:1			
30-100	±0.30	TT		SNAP ON FEMALE WITH DIMPLE						
100-300	±0.50	TERMINAL TECHNOLOGIES (I) PVT. LTD.		DRAWING_NUMBER	D/TT/200.R02	SHEET 1 OF 1				