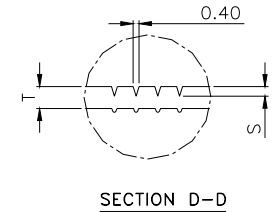
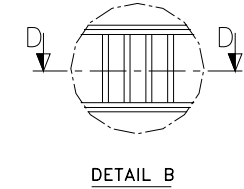
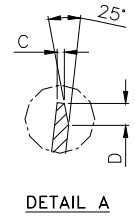
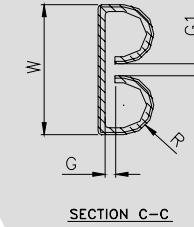
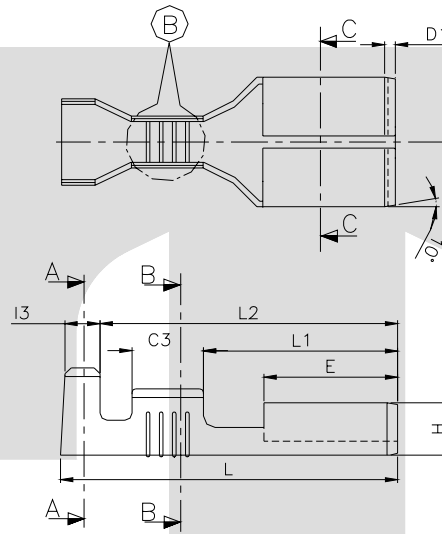
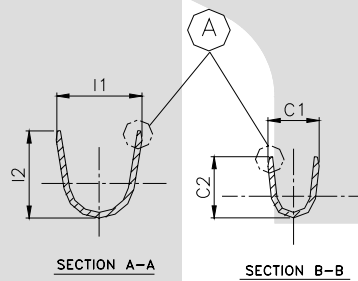


TERMINAL TO TERMINAL (FEMALE TO MALE) (6.30 X 0.80 MALE WITH TT-1980)		
DESCRIPTION	AT 1ST INSERTION	AT 10TH WITHDRAWAL
PUSH LOAD MAX.	2.00 KG.	
PULL LOAD MIN.		0.80 KG.
MAX. MV. DROP AT 10A	10 MV.	
MAX. MV. DROP AT 10A		15 MV.

DIMENSION CLASSIFICATION	
SYMBOL	DESCRIPTION
▲	CRITICAL



CAT. NO.	L	E	W	H	R	G	G1	L1	L2	C3	I3	C1	C2	I1	I2	T	D1	C	S	D	P	B	
TOLERANCE	+0.3 -0.3	+0.2 -0.2	+0.15 -0.15	+0.1 -0.1	+0.1 -0.1	+0.05 -0.05	+0.2 -0.1	+0.2 -0.2	+0.2 -0.2	+0.1 -0.1	+0.1 -0.1	+0.2 -0.2	+0.3 -0.3	+0.2 -0.2	+0.3 -0.3	+0.02 -0.02	+0.1 -0.3	+0.05 -0.05	+0.02 -0.02	+0.3 -0.3	+0.05 -0.05	+0.0	-0.15
TT- 1980	18.7	7.50	7.50	2.95	1.70	0.55	0.80	10.9	16.4	4.10	2.20	3.70	3.50	5.70	5.00	0.32	0.50	0.20	0.09	0.50	21.0	2.30	

CONTROLLED COPY  
TTPL

NOTE:-

MATERIAL	70/30BRASS
FINISH	NATURAL
THICKNESS	0.32 ± 0.02
HARDNESS IN VPN	130 - 160

TT-1980

TERMINAL PITCH  $21.0^{+0.05}_{-0.05}$

TERMINAL INSERTION FORCE INTO COUPLER:- 1.50 KG.MAX.  
TERMINAL WITHDRAWL FORCE INTO COUPLER:- 6.00 KG.MIN.

06	CABLE SIZE	0.5-1.5MM2	0.5-2.0MM2	31/10/07	S.C	VENU	200
05	C1	3.50	3.70	29/05/05	AM	VENU	156
04	No. of Serrations	3	4	19/02/05	AM	VENU	131
03	C, S, D	NOT SHOWN	$0.20^{+0.05}_{-0.05}$ , $0.09^{+0.02}_{-0.02}$ , $0.50^{+0.30}_{-0.30}$	17-6-03	VENU	VENU	19 A
02	C1, I1	3.00, 5.00	3.50, 5.70	13-04-03	PSB	VENU	11 A
01	E, G1	7.40, 0.90	7.50, 0.80	25-12-01	VENU	VENU	--
REV.NO.	AL. NO.	WAS	CHANGED TO	DATE	NAME	CHD.BY.	ECN NO.
GEN TOL.		CAT.NO.	TAB SIZE	CABLE SIZE	ALL DIMENSIONS ARE IN MM		
0-10	± 0.10	TT-1980	6.30 X 0.80	0.50 - 2.0 mm <sup>2</sup>			
10-30	± 0.20	DRN BY VENU	CHECKED BY SANTOSH	APPROVED BY DATE SUJESH	FILENAME Tt-1980	DATE 13-04-03	SCALE 2:1
30-100	± 0.30	<b>TT</b>			SNAP ON FEMALE TERMINAL		
100-300	± 0.50	TERMINAL TECHNOLOGIES (I) PVT. LTD.			DRAWING_NUMBER	D/TT/194,R06	SHEET 1 OF 1