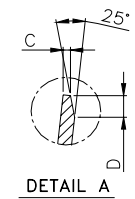
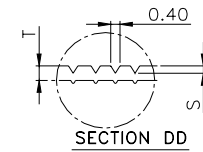
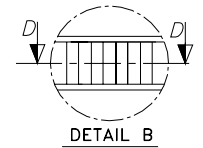
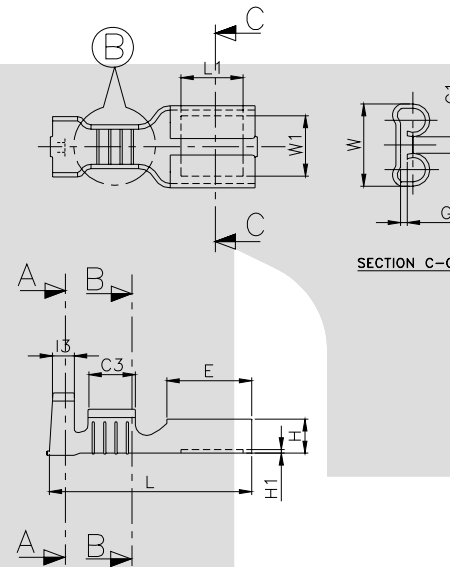
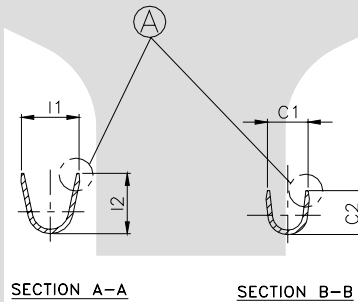


TERMINAL TO TERMINAL (FEMALE WITH MALE) ( TT-2538 WITH 6.30 X 0.80 MALE)		
DESCRIPTION	AT 1ST INSERTION	AT 10TH WITHDRAWAL
PUSH LOAD MAX.	2.0 KG.	
PULL LOAD MIN.		0.8 KG.
MAX. MV. DROP AT 10A	10 MV.	
MAX. MV. DROP AT 10A		15 MV.

DIMENSION CLASSIFICATION	
SYMBOL	DESCRIPTION
▲	CRITICAL



CAT NO.	L	E	W	H	G	G1	L1	W1	H1	C3	I3	C1	C2	I1	I2	C	S	D	P	B	T
TOLERANCE	+0.3 -0.3	+0.2 -0.2	+0.15 -0.15	+0.15 -0.1	+0.05 -0.05	+0.1 -0.1	+0.5 -0.5	+0.5 -0.5	+0.1 -0.1	+0.1 -0.1	+0.1 -0.1	+0.2 -0.2	+0.3 -0.3	+0.2 -0.2	+0.3 -0.3	+0.05 -0.05	+0.04 -0.04	+0.3 -0.3	+0.05 -0.05	+0.0 -0.15	+0.02 -0.02
TT-2538	19.0	7.50	7.70	3.20	0.55	1.00	5.00	5.00	0.30	4.00	2.00	3.50	3.50	5.00	5.00	0.20	0.10	0.50	21.0	2.00	0.32

CONTROLLED COPY  
TTPL

NOTES:-

MATERIAL	P.B
FINISH	TIN
THICKNESS	0.32 <sup>+0.02</sup>
HARDNESS IN VPN	130 - 160

TT-2538

UNSPECIFIED RADIUS IS 0.3  
UNSPECIFIED CHAMFER IS 0.5

TERMINAL PITCH 21.00<sup>+0.05</sup><sub>-0.05</sub>

PLATING THICKNESS:- 1.50 MICRON MIN. IN CASE OF PLATING  
TERMINAL INSERTION FORCE INTO COUPLER:- 1.50KG.MAX. ▲  
TERMINAL WITHDRAWL FORCE INTO COUPLER:- 6.00.KG.MIN. ▲

04	G1	0.80 +/-0.1	1.0 +/-0.1	12/01/07	PATIL	VENU	192
03	E	7.70	7.50	28/06/05	AM	VENU	164
02	G1	0.90 +/-0.1	0.80 +/-0.1	06/06/05	AM	VENU	159
01	No. of serration	3	4	01/03/05	AM	VENU	132 A
REV.NO.	AL. NO.	WAS	CHANGED TO	DATE	NAME	CHD.BY.	ECN No.
GEN.TOL.	CAT NO.	TAB SIZE	CABLE SIZE	ALL DIMENSIONS ARE IN MM			
0-10	TT-2538	6.30 X 0.80	0.50-1.50 mm <sup>2</sup>				
10-30	DRN BY VENU	CHECKED BY	APPROVED_BY_DATE	FILENAME Tt-2538	DATE 31-08-04	SCALE 2:1	
30-100	<b>TT</b>			SNAP ON FEMALE TERMINAL			
100-300	TERMINAL TECHNOLOGIES (I) PVT. LTD.			DRAWING_NUMBER	D/TT/275.R04	SHEET 1 OF 1	