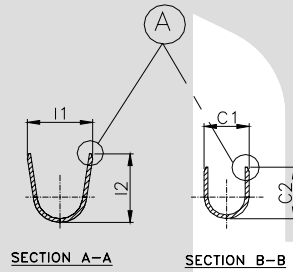


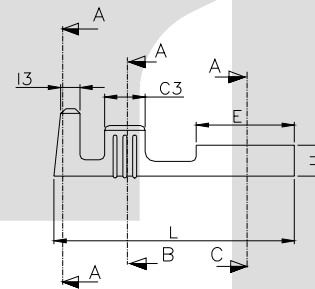
DETAIL B

TERMINAL TO TERMINAL (MALE WITH FEMALE) (TT-1927 WITH 8.00 X 0.80mm FOLDED FEMALE)		
DESCRIPTION	AT 1ST INSERTION	AT 10TH WITHDRAWAL
PUSH LOAD MAX.	2.0 KG.	
PULL LOAD MIN.		0.8 KG.
MAX. MV. DROP AT 20A	10 MV.	
MAX. MV. DROP AT 20A		15 MV.

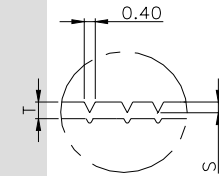


SECTION A-A

SECTION B-B

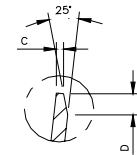


SECTION C-C



SECTION D-D

DIMENSION CLASSIFICATION	
SYMBOL	DESCRIPTION
▲	CRITICAL



DETAIL A

CONTROLLED COPY
TTPL

CAT. NO.	L	W	H	G	G1	E	C1	C2	C3	I1	I2	I3	C	S	D	P	B	T
TOLERANCE	+0.3 -0.3	+0.1 -0.1	+0.1 -0.1	+0.1 -0.2	+0.05 -0.05	+0.1 -0.2	+0.2 -0.2	+0.3 -0.3	+0.1 -0.1	+0.2 -0.2	+0.3 -0.3	+0.1 -0.1	+0.1 -0.1	+0.04 -0.04	+0.3 -0.3	+0.05 -0.05	+0.00 -0.15	+0.02 -0.02
TT- 2927	24.5	8.90	3.20	2.30	0.70	9.70	4.60	5.40	4.00	7.80	7.30	2.20	0.25	0.10	0.50	26.5	2.00	0.40

NOTES:-

MATERIAL	P B.
FINISH	NATURAL
THICKNESS	0.40 ^{+0.02}
HARDNESS IN VHN	130 - 160

TT-2927

UNSPECIFIED RADIUS IS 0.3
 UNSPECIFIED CHAMFER IS 0.5^{+0.05}
 TERMINAL PITCH 26.50^{-0.05}

PLATING THICKNESS:- 1.50 MICRON MIN. IN CASE OF PLATING
 TERMINAL INSERTION FORCE INTO COUPLER:- 2.50KG. MAX.
 TERMINAL WITHDRAWL FORCE FROM COUPLER:- 6.00KG. MIN.

01	No. of Serrations	3	4	26/06/05	AM	VENU	165
REV. NO.	AL. NO.	WAS	CHANGED TO	DATE	NAME	CHD. BY.	ECN NO.
GEN TOL.	CAT NO.	TAB SIZE	CABLE SIZE	ALL DIMENSIONS ARE IN MM			
0-10	TT-2927	7.60 X 0.80	2.0 - 4.0 mm ²				
10-30	DRN BY	CHECKED BY	APPROVED BY DATE	FILENAME	DATE	SCALE	
	VENU	SANTOSH	SUJESH	T1-2927	16-02-02	2:1	
30-100	TT TERMINAL TECHNOLOGIES (I) PVT. LTD.			SNAP ON FEMALE TERMINAL			SHEET
100-300				DRAWING_NUMBER	D/TT/06,R01	1 OF 1	