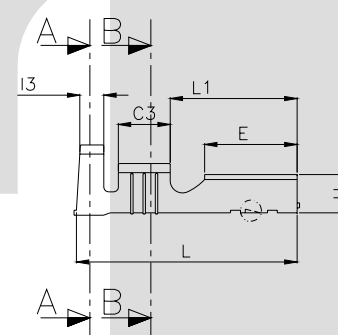
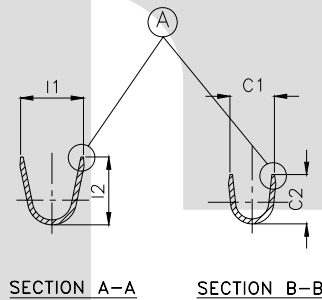


TERMINAL TO TERMINAL (FEMALE WITH MALE) (6.30 X 0.80 MALE WITH TT-2960)		
DESCRIPTION	AT 1ST INSERTION	AT 10TH WITHDRAWAL
PUSH LOAD MAX.	5.0 KG	
PULL LOAD MIN.		2.0 KG
MAX. MV. DROP AT 10A	10 MV.	
MAX. MV. DROP AT 10A		15 MV.

DIMENSION CLASSIFICATION	
SYMBOL	DESCRIPTION
▲	CRITICAL



CONTROLLED COPY
TTPL

CAT NO.	L	E	W	H	G	G1	F	L1	C3	I3	C1	C2	I1	I2	C	S	D	P	B
TOLERANCE	+0.3 -0.3	+0.2 -0.2	+0.15 -0.15	+0.1 -0.1	+0.05 -0.05	+0.2 -0.3	+0.15 -0.15	+0.2 -0.2	+0.1 -0.1	+0.1 -0.1	+0.2 -0.2	+0.3 -0.3	+0.2 -0.2	+0.3 -0.3	+0.05 -0.1	+0.04 -0.04	+0.3 -0.3	+0.05 -0.05	+0.0
TT-2960	19.0	7.50	7.50	3.10	0.61	1.70	4.20	10.5	4.30	2.20	3.80	4.00	5.50	5.50	0.25	0.10	0.60	21.0	2.00

NOTES:-

MATERIAL	P B
FINISH	NATURAL
THICKNESS	0.40 ± 0.02
HARDNESS IN VPN	130 - 160

TT-2960

UNSPECIFIED RADIUS IS 0.3
UNSPECIFIED CHAMFER IS 0.5

TERMINAL PITCH $21.00^{+0.05}_{-0.05}$

PLATING THICKNESS:- 1.50 MICRON MIN. IN CASE OF PLATING
TERMINAL INSERTION FORCE INTO COUPLER:- 2.50KG. MAX
TERMINAL WITHDRAWAL FORCE FROM COUPLER:- 6.00 KG. MIN.

01	C & S	NOT SHOWN	0.25 , 0.10	10-9-03	BN	BN	37 B
REV. NO.	AL. NO.	WAS	CHANGED TO	DATE	NAME	CHD. BY.	ECN NO.
GEN TOL	CAT NO	TAB SIZE	CABLE SIZE		ALL DIMENSIONS ARE IN MM		
0-10 ±0.10	TT-2960	6.30 X 0.80	0.75 - 2.0 mm ²				
10-30 ±0.20	DRN BY VENU	CHECKED BY SANTOSH	APPROVED BY DATE SUJESH	FILENAME TT-2960	DATE 19-04-99.	SCALE 2:1	
30-100 ±0.30	TT			SNAP ON FEMALE TERMINAL			
100-300 ±0.50	TERMINAL TECHNOLOGIES (I) PVT. LTD.			DRAWING_NUMBER	D/TT/19R01	SHEET 1 OF 1	